

18 Quality of Fuel Liquid Waste Biogas Tofu Using Starter Composition Variation

by Nely Ana

Submission date: 28-May-2021 06:18AM (UTC+0800)

Submission ID: 1595574574

File name: Liquid_Waste_Biogas_Tofu_Using_Starter_Composition_Variation.pdf (282.2K)

Word count: 3258

Character count: 15799



Quality of Fuel Liquid Waste Biogas Tofu Using Starter Composition Variation

Nely Ana Mufarida¹, Asroful Abidin²
Teknik Mesin, Universitas Muhammadiyah Jember, Indonesia
nelyana@unmuhjember.ac.id

Abstract. Fossil fuels are a primary energy source. Fossil fuels that are widely used are in the form of fuel oil, gas fuel, and coal. Along with technological developments, the need for fossil fuels is increasing, which is followed by the depletion of supplies. Therefore, renewable energy is needed which is cheap and easy to use on a household scale such as biogas. The materials used as biogas are tofu liquid waste with a yeast starter, EM-4, and horse manure. Tests on the quality of tofu liquid waste biogas conducted in this study include; Gas volume, temperature, degree of acidity (pH), C/N ratio, and gas content, namely methane (CH₄), hydrogen sulfide (H₂S), carbon monoxide (CO), and oxygen (O₂). In the test results, it was found that the increase in the quality of tofu liquid waste biogas by using horse dung starter was producing a volume of 513.6 ml, a temperature of 31.7oC, a C/N ratio of 5.336, a CH₄ content of 69%, and H₂S content of 5 ppm, a CO content of 9 ppm and an O₂ content of 16.3%.

Keywords- Yeast, EM-4, Horse Manure, Liquid Waste Biogas Tofu

How to cite: Nely Ana Mufarida¹, Asroful Abidin² (2020) ,Quality Of Fuel Liquid Waste Biogas Tofu Using Starter Composition Variation. R.E.M. (Rekayasa Energi Manufaktur) Jurnal | Vol.5 no.2. doi: 10.21070/rem.v5i2.1001

INTRODUCTION

Fossil fuel sources are primary energy. Fossil fuels that are widely used are in the form of fuel oil, gas fuel, and coal. Along with technological developments, the need for fossil fuels is increasing which is followed by the depletion of supplies. Moreover, fossil fuel utilization tend to pollute our environment triggering global warming [1]. Therefore, renewable energy is very suitable to be used as an environmentally friendly alternative energy. One of the environmentally friendly alternative energy is biogas. Biogas is a gas resulting from the fermentation activity of anaerobic microorganisms from organic materials [2]. Tofu liquid waste is one of the organic materials with high organic compound content [3]. Livestock waste such as horse manure can also be used as a substrate for producing biogas. The substrate in horse manure contains methane-forming bacteria [4]. Tape yeast contains various microbes, especially *Saccharomyces cerevisiae* which can accelerate the anaerobic process [5]. EM-4 (Effective Microorganisms-4) contains 90% of *Lactobacillus* sp [6]. These bacteria can optimize the use of organic material to become biogas. This paper will discuss the quality of tofu liquid waste biogas by using variations in the composition of the starter.

METHODS

In this research, to collect data using experimental methods. Experimental research is research that is conducted by manipulating the object of research and the existence of control. Tests are carried out to obtain the required data. The research process carried out was to test the quality of the tofu liquid waste biogas fuel with

the parameters of gas volume, temperature, C/N ratio, CH₄ gas content, H₂S gas, CO gas, and O₂ gas. There are three variables used in this study, namely variations in the composition of horse dung starter, yeast, and EM-4. The composition of the starter can be seen in Table 1 below.

Table 1. Percentage of variation in starter composition

Variable	Horse Manure (%)	Tofu Liquid Waste (%)	Yeast (%)	EM-4 (%)
B1	75	25	0	0
B2	65	25	0	10
B3	68	25	7	0

Tofu Liquid Waste Biogas Design

The following components are needed in the manufacture of tofu liquid waste biogas as shown in Figure 1 below.

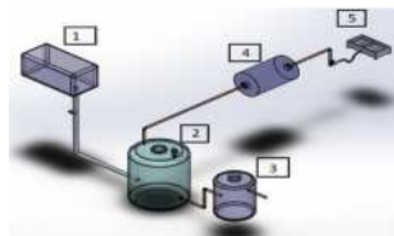


Figure 1. Tofu liquid waste biogas design

<http://doi.org/10.21070/rem.v5i2.1001>



Copyright © 2020 Author [s]. This is an open-access article distributed under the terms of the Creative Commons Attribution License (CC BY). The use, distribution or reproduction in other forums is permitted, provided the original author(s) and the copyright owner(s) are credited and that the original publication in this journal is cited, in accordance with accepted academic practice. No use, distribution or reproduction is permitted which does not comply with these terms.

Caption:

1. Tofu liquid waste
2. Biogas reactor
3. Outlet
4. Gas storage
5. Gas stove

Tools and Materials

Before the biogas formation process is carried out, the following are carried out first:

Mixing Starter

1. Prepare horse manure and tofu liquid waste according to the starter mixture in table 1.
2. Adding water to horse manure in a ratio of 1: 1
3. Adding tofu liquid waste, then stirring until dissolved.
4. Repeating the above steps 3 times to obtain 3 variables.

Addition of starter composition

1. Adding 150 ml of diluted yeast to variable B3.
2. Adding 700 ml of EM-4 solution to variable B2.

Fermentation Process

1. Adding NaOH solution to each variable little by little until the pH value is at 8.
2. Then check the C/N ratio for each variable.
3. Close the digester tightly so that the air cannot escape.
4. The fermentation process lasts for 21 days.

Testing the biogas quality of tofu wastewater

1. Measuring the volume of biogas.
2. Measure the temperature found on the digester surface using an infrared thermometer.
3. Measuring the content of methane gas (CH₄), hydrogen sulfide gas (H₂S), carbon monoxide gas (CO), and oxygen gas (O₂) using a gas analyzer.

RESULTS AND DISCUSSION

Obtaining data in this study is data on the value of gas volume, temperature, degree of acidity, C/N ratio of methane gas content (CH₄), hydrogen sulfide (H₂S), carbon monoxide (CO), and oxygen (O₂).

pH

Tofu liquid waste has a relatively low pH. This means that tofu liquid waste has acidic nature. The recommended value for the degree of acidity to obtain optimal biogas quality is between 6.8 to 8 [7]. Therefore, tofu liquid waste needs to be added with a solution that has an alkaline character, namely sodium hydroxide (NaOH).

C/N Ratio

C/N ratio is a quantity that states the ratio of the number of carbon atoms divided by nitrogen atoms [8]. In the reactor, there is a microbial population that requires carbon and nitrogen. Data on the C/N ratio value of each variable can be seen in Table 2 below:

Table 2. Value of C/N ratio for each variable

Variable	B1	B2	B3
C/N ratio (%)	5,336	4,795	4,832

The optimum C/N ratio range for carrying out the anaerobic digestion process is between 25-30 [9]. Based from the data above, the C/N ratio value of variable B1 has the greatest value among the other two variables. This indicates that the microorganisms in variable B1 are easier to carry out the anaerobic digestion process.

Digester temperature value

The temperature measured in this study is the temperature in the digester which can be seen in Figure 2 below:

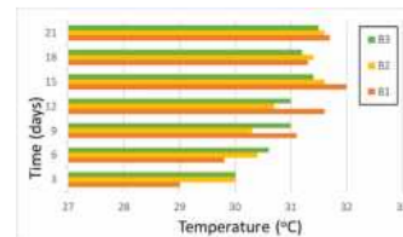


Figure 2. The temperature value in the digester

Based from the data above, the temperature of the three variables on the 3rd day is in the 29-30°C interval. Then on the 6th to 9th day, the temperature of the three variables increased, namely at 30-31°C intervals. On the 12th day to the 15th day the temperature value has increased again, namely at the interval 31-32°C. However, on the 18th to 21st day, the temperature value actually decreased, namely in the 31-31.5°C interval.

The best temperature for the growth of mesophilic microbes is 30°C or slightly higher [9]. Based from the data above, the three variables have an average temperature of 31°C. However, the temperature value in variable B1 can reach 32°C on the 15th day of the fermentation process. This means that microbial growth in variable B1 is more optimal than other variables.

The temperature value in this study has an erratic increase and decrease. This is caused by the temperature factor in the environment around the digester.

Biogas volume value

The volume of biogas measured in this study was calculated every 3 days until the 21st day of the fermentation process. The resulting change in biogas volume data can be seen in Figure 1 below:

<http://doi.org/10.21070/rem.v5i2.1001>

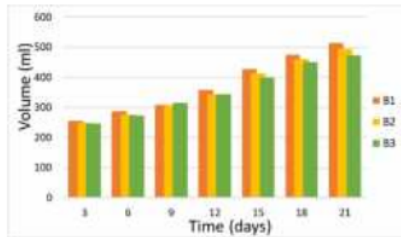


Figure 3. Biogas volume versus fermentation time

The volume of biogas produced from day 3 to 21 continues to increase because the temperature in the digester can affect the biogas production. The best temperature for the growth of mesophilic microbes is 30°C or slightly higher [10]. The measured temperature that acts on the digester occurs at intervals between 28 - 32°C during the fermentation process. This shows that the volume of biogas has increased with increasing fermentation time.

Methane gas (CH₄) value

Methane gas measured in this study was calculated every 3 days until the 21st day of the fermentation process. The data on changes in the resulting CH₄ gas levels can be seen in the following graph 3:

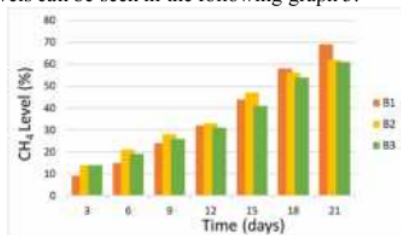


Figure 4. CH₄ levels against fermentation time

Based from the data above, it can be seen that CH₄ levels continue to increase from day 3 to day 21. The highest CH₄ levels produced on the 3rd day were B2 and B3 variables at 14%. Then on the 6th day, most CH₄ levels were generated in variable B2 with a value of 21%. On the 9th day, the highest level of CH₄ was generated in the B2 variable with a value of 28%. Then on the 12th day, the highest CH₄ levels were found in variable B2 with a value of 33%. On the 15th day, variable B2 had the highest CH₄ level, namely 47%. Then on the 18th day, the CH₄ content of variable B1 had the largest value, namely 58%. On the 21st day, most CH₄ levels were generated by variable B1 with a value of 69%.

The levels of CH₄ gas produced on the 21st day of each variable were 69% B1, 62% B2, and 61% B3. The ideal CH₄ gas content in biogas is around 60-70% [11]. This shows that the variation in the composition of the three starters can be used as biogas fuel with the highest CH₄ content value owned by B1 at 69%.

Based on the graph above, it can be seen that the most biogas volume produced on the 3rd day is 254.6 ml in B1. Then the three variables experienced an increase in the amount of volume on the 6th day, namely 287.5 ml, 277.4 ml, and 273.2 ml. The increase in the amount of volume produced in the fermentation process for the three variables continues to increase until the 21st day. The largest volume of biogas is found in B1 with a value of 513.6 ml.

Hydrogen sulfide (H₂S) gas value

Hydrogen sulfide gas measured in this study was calculated every 3 days until the 21st day of the fermentation process. The resulting change in H₂S gas levels can be seen in Figure 4 below:

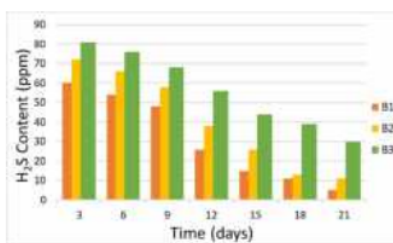


Figure 5. H₂S levels against fermentation time

Based from the graph above, it can be seen that the H₂S levels of the three variables produced on the 3rd day are 60 ppm, 72 ppm, and 81 ppm. Then the H₂S levels from B1, B2, and B3 on the 6th day decreased, namely by 54 ppm, 66 ppm, and 76 ppm. The decrease in the amount of H₂S levels produced in the fermentation process continued to decrease until the 21st day, which was 5 ppm at B1, 11 ppm at 2, and 30 ppm at B2.

The increase in CH₄ gas levels was caused by the absorption of CO₂ gas and H₂S gas contained in the biogas. Furthermore, CO₂ gas will break down into one C atom and two O atoms, while H₂S gas will break down into two H atoms and one S atom [12]. This shows that the less H₂S gas levels, the CH₄ gas levels will increase.

Carbon monoxide (CO) gas value

The carbon monoxide gas measured in this study was calculated every 3 days until the 21st day of the fermentation process. The resulting change in CO gas levels can be seen in Figure 5 below:

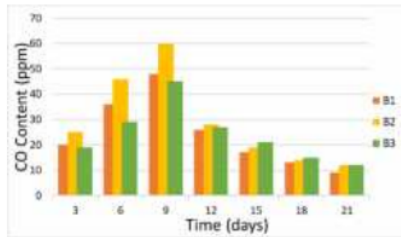


Figure 6. CO levels on fermentation time

Based on the graph above, it can be seen that the CO levels of the three resulting variables have increased from day 3 to day 9. The B2 variable has the highest CO levels on day 3 to day 9, which is 25 ppm on day 3 and 60 ppm on day 9. Then the levels of CO in the three variables on the 12th day experienced a significant decrease, namely B1 by 26 ppm, B2 by 28 ppm, and B3 by 27 ppm. The decrease in CO levels continued until the 21st day. Variable B1 has the smallest CO content, which is 9 ppm. The smaller the CO gas content in the fermentation process, the more efficient the microorganisms are in forming CO₂ gas so that the air pollution produced by the digester is getting smaller [13].

Value of oxygen gas (O₂)

The oxygen gas measured in this study was calculated every 3 days until the 21st day of the fermentation process. Data on changes in the resulting O₂ gas levels can be seen in Figure 6 below:

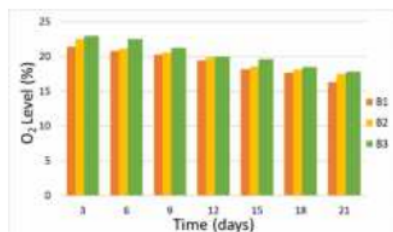


Figure 7. O₂ levels against fermentation time

Based from the graph above, it can be seen that the third O₂ levels produced on the 3rd day are B1 of 21.4%, B2 of 22.5%, and B3 of 23%. Then the three variables experienced a decrease in the amount of O₂ on the 6th day. The value of O₂ levels on the 6th day of B1 was 20.8%, B2 was 21.1% and B3 was 22.5%. The decrease in the amount of O₂ levels produced by the three variables in the fermentation process continued to decrease until the 21st day. The value of O₂ levels is at least in variable B1, which is 16.3%. Biogas production will be more optimal if anaerobic fermentation is carried out completely in conditions without oxygen (O₂) [14]. This shows that the increase in the quality of tofu liquid waste biogas can be identified by the oxygen content produced.

CONCLUSION

1. From the research results obtained, the effect of using variations in the composition of the starter on variable B1 has increased the quality of biogas fuel, marked by an increase in the volume of 513.6 ml, the temperature of 31.7°C, C/N ratio of 5.336, CH₄ content of 69%, and decreasing H₂S content of 5 ppm, CO of 9 ppm, and O₂ of 16.3%.
2. From the research results obtained, the effect of using variations in the composition of the starter on the B3 variable has decreased the quality of biogas fuel, marked by an increase in the volume of 473.2 ml, temperature 31.5°C, C/N ratio of 4.832, CH₄ content of 61%, and decreasing H₂S content of 30 ppm, CO of 12 ppm, and O₂ of 17.8%.

REFERENCES

- [1] A. Abidin, C. W. Purnomo, and R. B. Cahyono, "Hydro-char Production from Press-mud Wastes of The Sugarcane Industry by Hydrothermal Treatment with Natural Zeolite Addition," vol. 020049, 2018.
- [2] Megawati and K. W. Aji, "Pengaruh Penambahan Em4 (Effective Microorganism-4) pada Pembuatan Biogas dari Eceng Gondok dan Rumen Sapi," vol. 4, no. 2, pp. 42–49, 2015.
- [3] W. Samsudin, M. Selomo, and M. F. Natsir, "Pengolahan Limbah Cair Industri Tahu Menjadi Pupuk Organik Cair dengan Penambahan Effektive Mikroorganisme-4 (Em-4)," vol. 1, 2018.
- [4] A. Darmanto, S. Soeparman, and D. Widhiyanuriawan, "Pengaruh Kondisi Temperatur Mesophilic (35°C) Dan Thermophilic (55°C) Anaerob Digester Kotoran Kuda Terhadap Produksi Biogas," vol. 3, no. 2, pp. 317–326, 2012.
- [5] R. Muin, I. Hakim, and A. Febriyansyah, "Pengaruh Waktu Fermentasi dan Konsentrasi Enzim Terhadap Kadar Bioetanol dalam Proses Fermentasi Nasi Aking Sebagai Substrat Organik," vol. 21, no. 3, pp. 59–69, 2015.
- [6] F. Ali, D. P. Utami, and A. Komala, "Pengaruh penambahan EM4 dan larutan gula pada pembuatan pupuk kompos dari limbah industri crumb rubber," vol. 24, no. 2, pp. 47–55, 2018.
- [7] E. S. Lestarie, Y. A. Hidayati, and W. Juanda, "Analisis Jumlah Bakteri Anaerob dan Proporsi Gas Metana pada Proses Pembentukan Biogas dari Feses Sapi Perah dalam Tabung Hungate," pp. 1–13, 2016.
- [8] Aelita, A. Dharma, and B. Arifin, "Fermentasi Anaerobik Limbah Kulit Singkong dan Kotoran Kelinci untuk Produksi Biogas," vol. 2, no. 2303, 2013.
- [9] V. S. Anggari and Prayitno, "Studi Literatur Limbah Tapioka untuk Produksi Biogas : Metode Pengolahan dan Peranan Starter," vol. 6, no. 9, pp. 176–187, 2020.

 <http://doi.org/10.21070/rem.v5i2.1001>




- [10] N. Valentino, Z. D. Hastuti, and A. Wibowo, "Pengaruh Suhu Terhadap Proses Produksi Biohidrogen Dari Hasil Fermentasi Palm Oil Mill Effluent (POME)," pp. 43–46, 2017.
- [11] B. Rahmadian, Santosa, and Azrifirwan, "Studi Tekno Ekonomi Pembuatan Biogas di PT. SHGW (Stichting Het Groene Woudt) Bio Tea Indonesia," 2012.
- [12] E. Kusumawati and D. N. Nur, "Peningkatan Kualitas Biogas Melalui Proses Adsorpsi Menggunakan Zeolite Alam," pp. 50–54, 2015.
- [13] Sugiarto, T. Oerbandono, D. Widhiyanuriyawan, and F. S. P. Putra, "Purifikasi Biogas Sistem Kontinyu Menggunakan Zeolit," vol. 4, no. 1, pp. 1–10, 2013.
- [14] G. Khaerunnisa and I. Rahmawati, "Pengaruh pH dan Rasio COD:N Terhadap Produksi Biogas dengan Bahan Baku Limbah Industri Alkohol (Vinasse)," vol. 2, no. 3, pp. 1–7, 2013.

Conflict of Interest Statement:

The author declares that the research was conducted in the absence of any commercial or financial relationships that could be construed as a potential conflict of interest.

Article History:

Received: 2 Oktober 2020 | Accepted: 25 November 2020 | Published: 30 Desember 2020

 <http://doi.org/10.21070/rem.v5i2.1001>

18 Quality of Fuel Liquid Waste Biogas Tofu Using Starter Composition Variation

ORIGINALITY REPORT

19%

SIMILARITY INDEX

16%

INTERNET SOURCES

18%

PUBLICATIONS

14%

STUDENT PAPERS

PRIMARY SOURCES

- 1 Imron Rosyadi, Ni Ketut Caturwati, Ahmad Fauzi. "Effect Of Water Content On Characteristics Fuel From The Municipal Solid Waste Through The Pyrolysis Process", R.E.M. (Rekayasa Energi Manufaktur) Jurnal, 2021
Publication

13%
- 2 Submitted to Surabaya University
Student Paper

2%
- 3 Nely Ana Mufarida, Orisanto Darma Setiawan. "Socialization of Tofu Liquid Waste Management (Whey Tofu) Becomes Biogas as Alternative Energy Reserves in the Framework of Creating an Environmentally Friendly Industry", Kontribusia (Research Dissemination for Community Development), 2020
Publication

1%
- 4 Wideawati Nurjuwita, Ashadi Sasongko, Tan Jeremy Hartanto, Mochammad Purwanto. "Potential and characterization biogas from

1%

tofu liquid waste with addition cow dung and effective microorganisms 4 as biocatalyst",
Materials Today: Proceedings, 2021

Publication

5	www.neliti.com Internet Source	1 %
6	aip.scitation.org Internet Source	<1 %
7	pro.unitri.ac.id Internet Source	<1 %
8	Annita Sari, Ambo Tuwo, Chair Rani, Amran Saru. "Water quality study and pollution index based on Physics-chemical parameters in the Youtefa Bay tourism area, Jayapura", IOP Conference Series: Earth and Environmental Science, 2020 Publication	<1 %
9	Yohandri Bow, Sahrul Effendi, Ahmad Taqwa, Gilang Rinditya, Muhammad Yori Pratama, Rusdianasari. "Analysis of Air Fuel Ratio on Combustion Flames of Mixture Waste Cooking Oil and Diesel using Preheating Method", IOP Conference Series: Earth and Environmental Science, 2021 Publication	<1 %
10	Herman Susanto, Sunardi Tjandra. "Perancangan Mekanisme Pelurusan Kawat	<1 %

SAE 304 (UNS S30400) Galvanized
Menggunakan Prinsip Pengerolan", R.E.M.
(Rekayasa Energi Manufaktur) Jurnal, 2021
Publication

11

www.greenenergyadvisorytaskforce.ca
Internet Source

<1 %

12

www.scribd.com
Internet Source

<1 %

13

B Budiyo, I Syaichurrozi. "A review: biogas production from tofu liquid waste", IOP Conference Series: Materials Science and Engineering, 2020
Publication

<1 %

14

K Leonardo, R S Dewi, A Sudiarno. "Usability testing on developed FES device according to the operator perspective", IOP Conference Series: Materials Science and Engineering, 2021
Publication

<1 %

15

journal.umsida.ac.id
Internet Source

<1 %

16

S Hartini, F Letsoin, A I Kristijanto. "Productive Liquid Fertilizer from Liquid Waste Tempe Industry as Revealed by Various EM4 Concentration", IOP Conference Series: Materials Science and Engineering, 2018
Publication

<1 %

Exclude quotes On

Exclude matches Off

Exclude bibliography On