




Knowledge E
Engaging minds



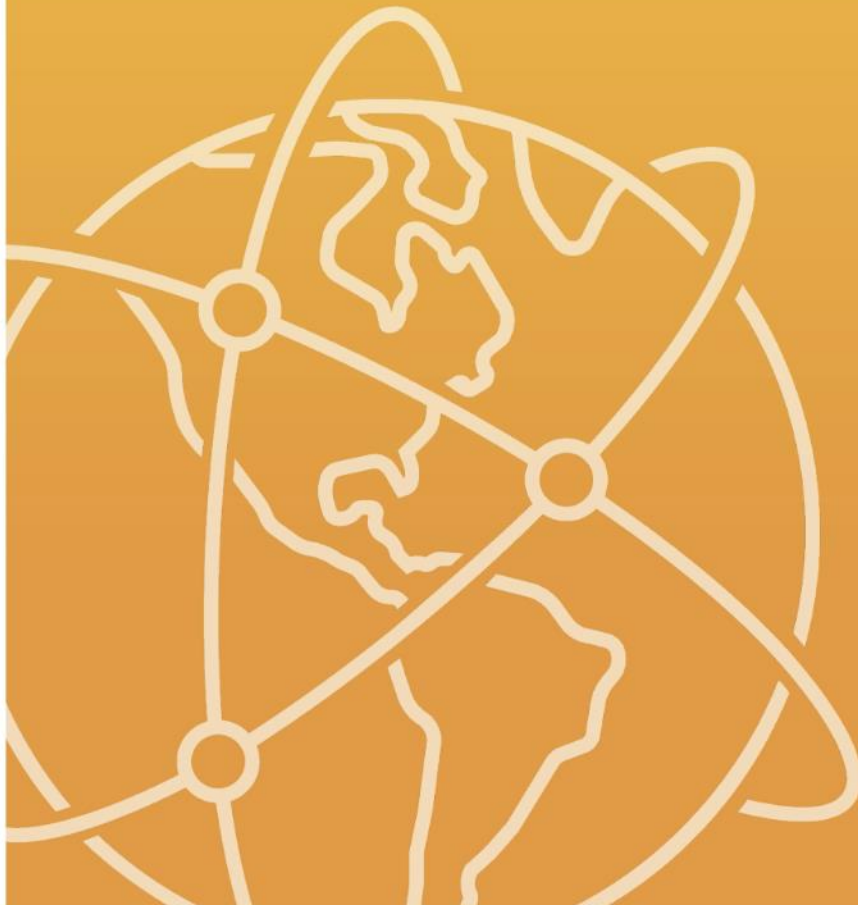
KnE Medicine

2nd International Conference on Medical Health Science

4 October 2022

Malang, Indonesia

ISSN 2519-125X



www.KnEpublishing.com

This collection contains selected papers from the **2nd International Conference on Medical Health Science** held in Malang, East Java, Indonesia on the 4th of October 2022. This event was hosted by the Faculty of Medicine and Faculty of Health Science, University of Muhammadiyah Malang.

This *KnE Medicine* collection contains 61 peer-reviewed articles exploring the key challenges faced by education and medical sectors during the COVID-19 pandemic. These articles focus on determining states of resilience across several institutional and individual levels. By dealing with major themes including medical practices, social support, and mental health, these studies explore some of the ways in which COVID-19 exacerbated existing medical and mental health conditions experienced by people before and after contracting the virus. While the medical sector continues to take on a major role in safeguarding the health and well-being of those most affected, some of the articles in this issue also evaluate the role of families and social institutions in providing valuable support systems for vulnerable populations. This collection sheds light on the necessity of improving institutional collaboration across a web of actors, including government, private, medical, and society.

These papers will be of interest to academics, students, or professionals researching or working in the field of health sciences.

Conference date: 4 October 2022

Location: Malang, Indonesia

Organizer: The Faculty of Medicine and Faculty of Health Science, University of Muhammadiyah Malang

Editors: Firasti Agung Nugrahening Sumadi, Alvina Arum Puspitasari, Indah Dwi Pratiwi, Anggraini Dwi Kurnia, Sirikul Karuncharernoanit, Lam Le Trinh, Sriyani Padmalatha

Published: 8 March 2023

ISSN: 2519-125X

The Effect of Ambon Banana (*Musa acuminata cola*) Diet on Young Adults' Resting Metabolic Rate

2ND INTERNATIONAL CONFERENCE ON MEDICAL HEALTH SCIENCE (2ND ICMEDH)

Pages 1–7 • Alif Maulida Habibia, Fathiyah Safitri, Aji Muthi'ah Nur Azizah, Diah Hermayanti

136 DOWNLOADS

[Download fulltext](#)

Evaluating Peer Assisted Learning (PAL) of the Online Study of Neuromusculoskeletal System Anatomy Based on the Objective Structured Practice Examination (OSPE) Scores

2ND INTERNATIONAL CONFERENCE ON MEDICAL HEALTH SCIENCE (2ND ICMEDH)

Pages 8–14 • Anung Putri Illahika, Thontowi Djauhari, Husnan .

217 DOWNLOADS

[Download fulltext](#)

Signs, Symptoms, and Management of Maternity Nursing Care in Post Sectio Caesarea with Indications of Preeclampsia: A Case Report

2ND INTERNATIONAL CONFERENCE ON MEDICAL HEALTH SCIENCE (2ND ICMEDH)

Pages 15–27 • Henny Dwi Susanti, Vidia Arisandi Laksito, Tri Lestari Handayani, Juwitasari ., Ririn Harini

374 DOWNLOADS

[Download fulltext](#)

Menopause Status and Risk Factors for COVID-19 in the Elderly

2ND INTERNATIONAL CONFERENCE ON MEDICAL HEALTH SCIENCE (2ND ICMEDH)

Pages 28–34 • Juwitasari ., Ririn Harini, Henny Dwi Susanti, Tri Lestari Handayani

112 DOWNLOADS

[Download fulltext](#)

The Influence of Mother's Occupation and Employment Status on Emotional Behavior of School-age Children

2ND INTERNATIONAL CONFERENCE ON MEDICAL HEALTH SCIENCE (2ND ICMEDH)

Pages 35–47 • Lilis Setyowati, Dwi Rahayu, Reni Ilmiasih, Nur Aini, Olyvia Freeska Dwi Marta, Erma Wahyu Mashfuta

291 DOWNLOADS

[Download fulltext](#)

Adverse Events Following Immunization (AEFI) of COVID-19 Vaccine: A Descriptive Survey in Malang City

2ND INTERNATIONAL CONFERENCE ON MEDICAL HEALTH SCIENCE (2ND ICMEDH)

Pages 48–60 • Nur Lailatul Masruroh, Imelda Devi Oktaviana, Chairul Huda Al Husna, Nur Melizza, Anggraini Dwi Kurnia

104 DOWNLOADS

[Download fulltext](#)

[Back to top](#)

Financial Risk Management Analysis of the Use of Health Services During the COVID-19 Pandemic

2ND INTERNATIONAL CONFERENCE ON MEDICAL HEALTH SCIENCE (2ND ICMEDH)

Pages 61–69 • Rezky Ami Cahyaharmita, Thontowi Djauhari Nur Subchi, Subi Hariyanto, Intan Putri Andriyani, Husni Fauziah, Amalia Nur Hidayati

124 DOWNLOADS

[Download fulltext](#)

Age, History of Vaccination, and Occupation As the Determining Factors of Higher Acceptance of the COVID-19 Vaccination in Tanah Laut Regency

2ND INTERNATIONAL CONFERENCE ON MEDICAL HEALTH SCIENCE (2ND ICMEDH)

Pages 70–81 • Eka Putri Aisyah, Sendi Lia Yunita, Rizka Novia Atmadani

166 DOWNLOADS

[Download fulltext](#)

Prevalence of Chronic Kidney Disease with Hepatitis B and/or Hepatitis C Comorbid in Hemodialysis Installation at the University of Muhammadiyah Malang General Hospital

2ND INTERNATIONAL CONFERENCE ON MEDICAL HEALTH SCIENCE (2ND ICMEDH)

Pages 82–90 • Ro'di Nur Fajri, Achmad Rifa'i, Anggita Puspitasari

308 DOWNLOADS

[Download fulltext](#)

Differences in Folate and Vitamin B12 Serum Levels Between Mothers Whose Children were Diagnosed with Non-syndromic Cleft Lip and Cleft Lip with Palate

2ND INTERNATIONAL CONFERENCE ON MEDICAL HEALTH SCIENCE (2ND ICMEDH)

Pages 91–98 • Ruby Riana Asparini, Satria Bintang Dirgantara, Diah Hermayanti

120 DOWNLOADS

[Download fulltext](#)

Analyzing Predictors of Low Back Pain Among Farmers in Bayung Gede, Kintamani, Bangli: A Case Report Study

2ND INTERNATIONAL CONFERENCE ON MEDICAL HEALTH SCIENCE (2ND ICMEDH)

Pages 99–105 • Sri Sunaringsih Ika Wardjojo, Rakhmad Rosadi, I Gede Rama Wahyu Prayoga

106 DOWNLOADS

[Download fulltext](#)

Risk Factors for Acute Myocardial Infarction in Young Adults: Literature Review

2ND INTERNATIONAL CONFERENCE ON MEDICAL HEALTH SCIENCE (2ND ICMEDH)

Pages 106–111 • Indri Wahyuningsih, Wahyu Mega Ika Deni, Henik Tri Rahayu, Indah Dwi Pratiwi

319 DOWNLOADS

[Download fulltext](#)

[Back to top](#)

[Cognitive Empowerment Model to Improve the Quality of Life of PLWHA](#)

2ND INTERNATIONAL CONFERENCE ON MEDICAL HEALTH SCIENCE (2ND ICMEDH)

Pages 112–119 • Tri Nurhudi Sasono, Esti Yunitasari, Ninuk Dian Kurniawati, Nursalam .

105 DOWNLOADS

[Download fulltext](#)

[Application of Precordial Lead ECG SafOne to Patients with Cardiovascular Disease: Evidence-based Practice](#)

2ND INTERNATIONAL CONFERENCE ON MEDICAL HEALTH SCIENCE (2ND ICMEDH)

Pages 120–128 • Wan Nishfa Dewi, Hellena Delli, Safri Safri, Yulia Rizka, Irwan Irwan

77 DOWNLOADS

[Download fulltext](#)

[The Relationship Between Family Involvement in Physiotherapy Home Programs and Activity Daily Living in Post-stroke Patients](#)

2ND INTERNATIONAL CONFERENCE ON MEDICAL HEALTH SCIENCE (2ND ICMEDH)

Pages 129–135 • Kurnia Putri Utami, Alif Rizky Rinanda Nur Fauziyah, Anita Faradilla Rahim

148 DOWNLOADS

[Download fulltext](#)

[Factors Influencing Adherence to the Treatment in Stroke Patients](#)

2ND INTERNATIONAL CONFERENCE ON MEDICAL HEALTH SCIENCE (2ND ICMEDH)

Pages 136–145 • Anis Ika Nur Rohmah, Syanindita Maharani Fadri

148 DOWNLOADS

[Download fulltext](#)

[Identifying COVID-19 Prevention Practices among Health Students](#)

2ND INTERNATIONAL CONFERENCE ON MEDICAL HEALTH SCIENCE (2ND ICMEDH)

Pages 146–155 • Anggraini Dwi Kurnia, Manahitul Irvan, Nur Melizza, Nur Lailatul Masruroh

95 DOWNLOADS

[Download fulltext](#)

[The Correlation Between Body Mass Index \(BMI\) and Hemodialysis Adequacy in Hemodialysis Patients](#)

2ND INTERNATIONAL CONFERENCE ON MEDICAL HEALTH SCIENCE (2ND ICMEDH)

Pages 156–161. • Chairul Huda Al Husna, Anis Ika Nur Rohmah, Iruruh Brihananto

125 DOWNLOADS

[Download fulltext](#)

[Back to top](#)

[Level of Knowledge of the Omicron Variant of the Sars-Cov2 Virus of Medical Students at Muhammadiyah Malang University](#)

2ND INTERNATIONAL CONFERENCE ON MEDICAL HEALTH SCIENCE (2ND ICMEDH)

Pages 162–177 • Diah Hermayanti, Alifia Salsabila Teka, Vania Nabila Putri, Yosiene Dhea Elfita

173 DOWNLOADS

[Download fulltext](#)

[Enhanced Antibacterial Activity of Piper betle Extract Niosome Serum Gel and Its Irritation Effects](#)

2ND INTERNATIONAL CONFERENCE ON MEDICAL HEALTH SCIENCE (2ND ICMEDH)

Pages 178–188 • Santika Tri Wahyuni, Dyah Rahmasari, Rifqi Sandi Nugroho, Ilham Agusta, Revie Dithya Kurnia Daminda, Riko Vikri Sundugesti, Dian Ermawati

287 DOWNLOADS

[Download fulltext](#)

[The Differences Between the Effect of Oral and Intraperitoneal Induction of Aluminum Chloride \(AlCl3\) on the Memory Function of White Rats \(Rattus norvegicus strain wistar\) Menopause Model](#)

2ND INTERNATIONAL CONFERENCE ON MEDICAL HEALTH SCIENCE (2ND ICMEDH)

Pages 189–194 • Kusuma Andriana, Irma Aulia, Rahayu .

199 DOWNLOADS

[Download fulltext](#)

[Stress in Adolescents During the Pandemic](#)

2ND INTERNATIONAL CONFERENCE ON MEDICAL HEALTH SCIENCE (2ND ICMEDH)

Pages 195–209 • Gita Sekar Prihanti, Adnexa Miftah Firdausy, Ghea Aprilia, Asti Yumna Adiningrum, Bima Mahardhika Aji, Novia Aprilia Rahma

131 DOWNLOADS

[Download fulltext](#)

[Comparison of Liver Disease in Patients Before and During the COVID-19 Pandemic Who were Admitted to the General Hospital of the University of Muhammadiyah Malang](#)

2ND INTERNATIONAL CONFERENCE ON MEDICAL HEALTH SCIENCE (2ND ICMEDH)

Pages 210–217 • Djoni Djunaedi, Gerry Permadi, Rezky Ami Cahyaharnita

86 DOWNLOADS

[Download fulltext](#)

[Social Support and Quality of Life Patients with Acquired Immune Deficiency Syndrome](#)

2ND INTERNATIONAL CONFERENCE ON MEDICAL HEALTH SCIENCE (2ND ICMEDH)

Pages 218–230 • Edi Purwanto, Mayang Sari, Aini Alifatin, Risa Herlianita

127 DOWNLOADS

[Download fulltext](#)

[Back to top](#)

Comparative Analysis of the Components of a Child's Gait Pattern with Flat Foot Disorder

2ND INTERNATIONAL CONFERENCE ON MEDICAL HEALTH SCIENCE (2ND ICMEDH)

Pages 231–242 • Atika Yulianti, Alfina Ramadani Dyah Efendi, Zidni Imanurrohmah Lubis

174 DOWNLOADS

[Download fulltext](#)

Correlation Between Adaptation Readiness and Psychological Well-being in the Elderly During the Transition Period of the COVID-19 Pandemic

2ND INTERNATIONAL CONFERENCE ON MEDICAL HEALTH SCIENCE (2ND ICMEDH)

Pages 243–250 • Ayesie Natasa Zulka, Ely Rahmatika Nugraheni

115 DOWNLOADS

[Download fulltext](#)

Nurses' Burnout in the Emergency Department and the Intensive Care Unit During COVID-19: A Literature Review

2ND INTERNATIONAL CONFERENCE ON MEDICAL HEALTH SCIENCE (2ND ICMEDH)

Pages 251–258 • Indah Dwi Pratiwi, Risa Herlianita, Indri Wahyuningsih

133 DOWNLOADS

[Download fulltext](#)

Study of Lisinopril in Heart Failure Patients

2ND INTERNATIONAL CONFERENCE ON MEDICAL HEALTH SCIENCE (2ND ICMEDH)

Pages 259–269 • Nalis Syifa, Nabila Rahmayanti, Liliik Yusetyani, Didik Hasmono

181 DOWNLOADS

[Download fulltext](#)

The Role of Adolescents in Bullying at School

2ND INTERNATIONAL CONFERENCE ON MEDICAL HEALTH SCIENCE (2ND ICMEDH)

Pages 270–277 • Nia Agustiniingsih, Ah Yusuf, Ahsan .

149 DOWNLOADS

[Download fulltext](#)

The Effect of the Combination of Tera Gymnastics and Square Stepping Exercises on the Level of the Elderly's Dynamic Balance

2ND INTERNATIONAL CONFERENCE ON MEDICAL HEALTH SCIENCE (2ND ICMEDH)

Pages 278–283 • Nungki Marlian Y, Agus Setiawan, Rama Manggala P

366 DOWNLOADS

[Download fulltext](#)

[Back to top](#)

Optimization of Tablet Formulations Containing Green Robusta Coffee Beans (Coffea canephora) Extract with Various Concentrations of Sodium Starch Glycolate As a Disintegrant

2ND INTERNATIONAL CONFERENCE ON MEDICAL HEALTH SCIENCE (2ND ICMEDH)

Pages 284–289 • Raditya Weka Nugraheni, Galih Ardhana Putra, Dian Ermawati

132 DOWNLOADS

[Download fulltext](#)

Overview of Knowledge Levels of People Who Are Willing to Vaccinate Against COVID-19 in the COVID-19 Vaccination Program at RSUMM

2ND INTERNATIONAL CONFERENCE ON MEDICAL HEALTH SCIENCE (2ND ICMEDH)

Pages 290–295 • Thontowi Djauhari, Rahma Sabila Rindradi

86 DOWNLOADS

[Download fulltext](#)

Mothers' Knowledge and Self-efficacy on Preventing Infections in Low-birth-weight Infants during the COVID-19 Pandemic

2ND INTERNATIONAL CONFERENCE ON MEDICAL HEALTH SCIENCE (2ND ICMEDH)

Pages 296–304 • Resti Utami, Siti Kholifah

121 DOWNLOADS

[Download fulltext](#)

Characteristics and Outcomes of COVID-19 Patients with Diabetes Mellitus at the University of Muhammadiyah Malang General Hospital

2ND INTERNATIONAL CONFERENCE ON MEDICAL HEALTH SCIENCE (2ND ICMEDH)

Pages 305–314 • Ro'di Nur Fajri, Ardhi Bustami, Zata Dini, Dinda Amalia Eka Putri, Anggita Puspitasari

85 DOWNLOADS

[Download fulltext](#)

Ethical Issues Found in Healthcare Providers in Suicide Prevention in Indonesia

2ND INTERNATIONAL CONFERENCE ON MEDICAL HEALTH SCIENCE (2ND ICMEDH)

Pages 315–324 • Tutu April Ariani, Olyvia Freeska Dwi Marta

141 DOWNLOADS

[Download fulltext](#)

Correlation Between the Quick of Blood and Quality of Life of Chronic Kidney Disease Patients in Dialysis Therapy in the Hemodialysis Unit at Wava Husada Hospital

2ND INTERNATIONAL CONFERENCE ON MEDICAL HEALTH SCIENCE (2ND ICMEDH)

Pages 325–332 • Wiwit Dwi Nurbadriyah, Nursalam Nursalam, Ika Yuni Widyawati, Hardiyanto ., Ardhiles Wahyu Kurniawan, Devi Santi Fatmawati

164 DOWNLOADS

[Download fulltext](#)

[Back to top](#)

Relationship Between Sleep Quality and Body Mass Index in Nursing Students in the University of Muhammadiyah Malang

2ND INTERNATIONAL CONFERENCE ON MEDICAL HEALTH SCIENCE (2ND ICMEDH)

Pages 333–342 • Zahdi Fikri, Khikmatul Mujizah, Yuven Yoga Pratama

456 DOWNLOADS

[Download fulltext](#)

Benson's Relaxation Techniques to Improve Sleep Quality in Diabetes Mellitus Patients

2ND INTERNATIONAL CONFERENCE ON MEDICAL HEALTH SCIENCE (2ND ICMEDH)

Pages 343–356 • Zaqqi Ubaidillah, Rani Karisma Rosul, Reni Ilmiasih

166 DOWNLOADS

[Download fulltext](#)

Comparison Between the Effectiveness of Static Stretching and Effleurage Massage for Pain Reduction in Myofascial Neck Pain

2ND INTERNATIONAL CONFERENCE ON MEDICAL HEALTH SCIENCE (2ND ICMEDH)

Pages 357–366 • Zidni Imanurrohmah Lubis, Nurul Izzah Al-Islamiyah, Atika Yulianti

290 DOWNLOADS

[Download fulltext](#)

Pregnancy and Neonatal Outcomes: A Study During the COVID-19 Pandemic

2ND INTERNATIONAL CONFERENCE ON MEDICAL HEALTH SCIENCE (2ND ICMEDH)

Pages 367–373 • Awatiful Azza, Nikmaturrahmah ., Ilanka Cahya Dewi

93 DOWNLOADS

[Download fulltext](#)

Knowledge, Perception, and Acceptance of COVID-19 Vaccination among the Public in Aikmel Health Care Center, East Lombok, West Nusa Tenggara, Indonesia: Cross-sectional Study

2ND INTERNATIONAL CONFERENCE ON MEDICAL HEALTH SCIENCE (2ND ICMEDH)

Pages 374–391 • Azrul Choliz Azzahabi, Rizka Novia Atmadani, Sendi Lia Yunita, Mutiara Titani

107 DOWNLOADS

[Download fulltext](#)

Sexual Activity of the Elderly During the COVID-19 Pandemic

2ND INTERNATIONAL CONFERENCE ON MEDICAL HEALTH SCIENCE (2ND ICMEDH)

Pages 392–402 • Bayu Prastowo, Aluf Mumtaziah Windayati

110 DOWNLOADS

[Download fulltext](#)

[Back to top](#)

Effect of Red Cabbage Aqueous Extract on High-density Lipoprotein (Hdl) Levels of Male White Rats Induced By Atherogenic Diet

2ND INTERNATIONAL CONFERENCE ON MEDICAL HEALTH SCIENCE (2ND ICMEDH)

Pages 403–409 • Desy Andari, Mutia Nur Salsabila, Meddy Setiawan, Diah Hermayanti

234 DOWNLOADS

[Download fulltext](#)

Ethical Analysis of Diabetes Self-management Education: Review on Indonesian Healthcare Services

2ND INTERNATIONAL CONFERENCE ON MEDICAL HEALTH SCIENCE (2ND ICMEDH)

Pages 410–419 • Henik Tri Rahayu, Mei-Chih Huang

239 DOWNLOADS

[Download fulltext](#)

The Effectiveness of Spiritual Therapy in Reducing the Anxiety Level of Preoperative Patients

2ND INTERNATIONAL CONFERENCE ON MEDICAL HEALTH SCIENCE (2ND ICMEDH)

Pages 420–426 • Diah Atul Angga Fiari, Nur Aini, Tiara Octary, Muhammad Ari Arfianto, Chairul Huda Al Husna

238 DOWNLOADS

[Download fulltext](#)

Identification of Parental Efforts in the Prevention of COVID-19 Infection in Children

2ND INTERNATIONAL CONFERENCE ON MEDICAL HEALTH SCIENCE (2ND ICMEDH)

Pages 427–434 • Reni Ilmiasih, Juwitasari .

188 DOWNLOADS

[Download fulltext](#)

Self-management in Asthma Patients: A Systematic Review

2ND INTERNATIONAL CONFERENCE ON MEDICAL HEALTH SCIENCE (2ND ICMEDH)

Pages 435–446 • Titik Agustyaningsih, Eka Rahayu, Edi Purwanto, Chairul Huda Al Husna

402 DOWNLOADS

[Download fulltext](#)

Relationship Between Physical Changes and Teen Confidence During Puberty

2ND INTERNATIONAL CONFERENCE ON MEDICAL HEALTH SCIENCE (2ND ICMEDH)

Pages 447–453 • Desy Nurfitriana, Tri Lestari Handayani, Henny Dwi Susanti, Aini Alifatin

257 DOWNLOADS

[Download fulltext](#)

[Back to top](#)

Sedentary Behavior Levels in Teenage Children During the COVID-19 Pandemic

Sedentary Behavior Levels in School-age Children During the COVID-19 Pandemic

2ND INTERNATIONAL CONFERENCE ON MEDICAL HEALTH SCIENCE (2ND ICMEDH)

Pages 454–464 • Aini Alifatin, Linda Hindrayani

190 DOWNLOADS

[Download fulltext](#)

The Effect of Jujube Leaf Extract in Preventing Memory Scores Deficit in White Wistar Rat Hypertension Model

2ND INTERNATIONAL CONFERENCE ON MEDICAL HEALTH SCIENCE (2ND ICMEDH)

Pages 465–472 • Dian Yuliartha Lestari, Dewi Nur Fatimah, Indra Setiawan

111 DOWNLOADS

[Download fulltext](#)

Coping Strategies of Caregivers of Patients with Schizophrenia in Malang Districts

2ND INTERNATIONAL CONFERENCE ON MEDICAL HEALTH SCIENCE (2ND ICMEDH)

Pages 473–479 • Faizatur Rohmi, Ah. Yusuf, Rizky Fitriyani, Hardiyanto ., Abdul Rokhim

171 DOWNLOADS

[Download fulltext](#)

Testing Mothers' Knowledge in Preventing COVID-19 in Children Through Animated Video Media and Booklets

2ND INTERNATIONAL CONFERENCE ON MEDICAL HEALTH SCIENCE (2ND ICMEDH)

Pages 480–487 • Ika Rizki Anggraini, Puja Putri Dewi Pati, Risa Herlianita, Nurlailatul Masruroh

88 DOWNLOADS

[Download fulltext](#)

The Relationship Between Body Shaming and Self-esteem in Students

2ND INTERNATIONAL CONFERENCE ON MEDICAL HEALTH SCIENCE (2ND ICMEDH)

Pages 488–499 • Nur Melizza, Anita Rahmawati, Muhammad Ari Arlianto, Erma Wahyu Mashfufa, Anggraini Dwi Kurnia, Nur Lailatul Masruroh

1291 DOWNLOADS

[Download fulltext](#)

Relationship Between Work Experience and Risk of Neuropathic Pain Among Loading–Unloading Workers

2ND INTERNATIONAL CONFERENCE ON MEDICAL HEALTH SCIENCE (2ND ICMEDH)

Pages 500–508 • Siti Ainun Marufa, Hendy Chandra Tjan, Safun Rahmanto, Atika Yulianti, Kurnia Putri Utami

105 DOWNLOADS

[Download fulltext](#)

[Back to top](#)

The Effect of Health Education-based Telenursing on the Public Knowledge of COVID-19 Preventive Strategies in the Elderly with Type II DM

2ND INTERNATIONAL CONFERENCE ON MEDICAL HEALTH SCIENCE (2ND ICMEDH)

Pages 509–517 • Sri Wahyuni Adriani, Dian Ratna Elmaghfuroh

130 DOWNLOADS

[Download fulltext](#)

Optimization of Emulgel Combination of Tea Tree Oil and Lavender Oil: Evaluation and Antibacterial Study

2ND INTERNATIONAL CONFERENCE ON MEDICAL HEALTH SCIENCE (2ND ICMEDH)

Pages 518–530 • Uswatun Chasanah, Annisa Nurwiyanti, Agatha Salsabila Mitakhurrohmah, Muhammad Hamid Afif, Zumrotun Najihah, Rovano Rizky Hanwidi Putra, Dyah Rahmasari

416 DOWNLOADS

[Download fulltext](#)

Nursing Implementation Case Study: Health Education on Self-care Management of Asthma Patients During the COVID-19 Pandemic in Indonesia

2ND INTERNATIONAL CONFERENCE ON MEDICAL HEALTH SCIENCE (2ND ICMEDH)

Pages 530–539 • Yoyok Bekti Prasetyo, Adellia Putri

204 DOWNLOADS

[Download fulltext](#)

Mannitol Usage Pattern in Hemorrhagic Stroke Patients

2ND INTERNATIONAL CONFERENCE ON MEDICAL HEALTH SCIENCE (2ND ICMEDH)

Pages 540–548 • Siti Aisyah, Didik Hasmono, Binti Muzayyanah, Firasti Agung NS

833 DOWNLOADS

[Download fulltext](#)

Objective Structured Clinical Examination (OSCE) Laboratory Learning Management for Nursing Students

2ND INTERNATIONAL CONFERENCE ON MEDICAL HEALTH SCIENCE (2ND ICMEDH)

Pages 549–552 • Sunardi ., Faqih Ruhyanudin, Rahayu .

158 DOWNLOADS

[Download fulltext](#)

A Systematic Review: Knowledge of Reproductive Health in Adolescents

2ND INTERNATIONAL CONFERENCE ON MEDICAL HEALTH SCIENCE (2ND ICMEDH)

Pages 553–564 • Ririn Harini, Juwitasari .

461 DOWNLOADS

[Download fulltext](#)

[Back to top](#)



CO - Host:

CERTIFICATE OF APPRECIATION

NO: 007/ICMEDH2/FK-FIKES-UMM/IX/2022

This Certificate is Proudly Presented To

Ely Rahmatika Nugrahani

as

Oral Presenter

The 2nd International Conference on Medical and Health Sciences

"Challenges During Pandemic COVID-19: How are The Education and Clinical Field Resilience"

24 September 2022

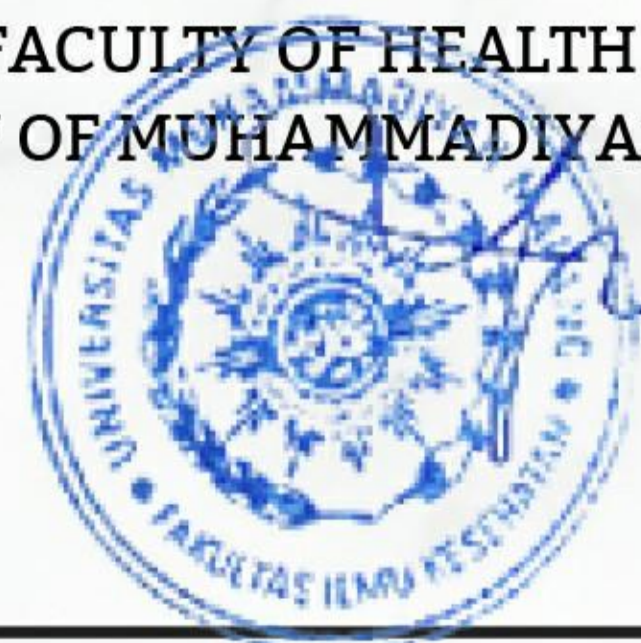
Malang, East Java, Indonesia

DEAN OF FACULTY OF MEDICINE
UNIVERSITY OF MUHAMMADIYAH MALANG



Dr. dr. H. Meddy Setiawan, Sp.PD-FINASIM

DEAN OF FACULTY OF HEALTH SCIENCE
UNIVERSITY OF MUHAMMADIYAH MALANG



Dr. Yoyok Bakti Prasetyo, M.Kep., Sp.Kom

CHAIRPERSON



Indah Dwi Pratiwi, S.Kep., Ns., M.Ng

Research Article

Correlation Between Adaptation Readiness and Psychological Well-being in the Elderly During the Transition Period of the COVID-19 Pandemic

Ayesie Natasa Zulka* and Ely Rahmatika Nugrahani

Program Studi Ilmu Keperawatan, Fakultas Ilmu Kesehatan, Universitas Muhammadiyah Jember, Jember, Indonesia

ORCIDAyesie Natasa Zulka: <https://orcid.org/0000-0001-9997-7388>**Abstract.**

The World Health Organization has announced that Indonesia has transitioned from a pandemic to an endemic period. This change means that vulnerable age groups, including the elderly, still need to be aware of the impact of COVID-19. The purpose of this study was to determine the relationship between adaptation readiness and psychological well-being in the elderly during this transition. This study used a cross-sectional approach. This research was conducted in the Sukorambi and Kalisat District, Jember Regency, with a total of 102 elderly respondents who were recruited using simple random sampling. The analysis test in this study used Spearman with $\alpha < 0.05$. The results showed that the adaptation readiness of the majority of the elderly was sufficient, as many as 41 elderly members (40.2%), and psychological well-being in the moderate category, as many as 40 elderly members (39.3%). Spearman test results were $0.000 < 0.005$, with a correlation coefficient of 0.503. Elderly adaptation readiness is associated with psychological well-being in the elderly with moderate strength. Good psychological well-being conditions will help the elderly to be able to adapt to various changing conditions, especially during the transition period of the COVID-19 pandemic.

Keywords: adaptation, COVID 19, elderly, psychological well-being

1. INTRODUCTION

The strong human-to-human transmission of Coronavirus 2019 (Covid-19) is still a concern for many sectors worldwide (1). Deaths from Covid-19 have decreased, but it is possible that this number will continue to grow. Breaking the chain of transmission in vulnerable groups must still be carried out in combating this problem, even during the pandemic transition (1).

A total of 6,069,255 people have been infected and 31% are in the elderly group. East Java has 399181 (+44) confirmed cases of Covid-19, 369323 (+51) recovered, and 169 (-8) active cases (Covid Task Force, 2021). Jember Regency also experienced a

Corresponding Author: Ayesie Natasa Zulka; email: ayesianatasazulka@unmuhjember.ac.id

Published 8 March 2023

Publishing services provided by Knowledge E

© Zulka and Nugrahani. This article is distributed under the terms of the [Creative Commons Attribution License](#), which permits unrestricted use and redistribution provided that the original author and source are credited.

Selection and Peer-review under the responsibility of the ICMEDH Conference Committee.

OPEN ACCESS

decrease in the number of Covid-19 cases, namely 16201 (+2) confirmed cases, 14740 (+3) recovered cases and 8 (+1) active cases. Jember was also declared to have a low risk, from the previous medium risk, with a Recovery Rate of 90.98% and a Fatality Rate of 8.97%.

The decrease in the number of cases has resulted in Indonesia, including Jember Regency, experiencing a transition period from Pandemic to Endemic. The government stated that the current state of the COVID-19 pandemic has entered a transitional period to become endemic. The decrease in the number of transmission and death to less than 1000 and the decrease in hospital occupancy rates by COVID-19 patients are indicators that the pandemic is in a controlled or transitional phase. (2). The Pandemic to Endemic Transition does not merely provide concessions to the population not to prevent the transmission of Covid-19. Individuals must continue to apply the 6 M, namely wearing a 2-layer mask, maintaining distance, washing hands with running water or hand sanitizer, avoiding crowds, limiting mobility and direct interaction, and supporting Covid-19 vaccination. Community awareness and participation is key in controlling the transition period(3)

Prevention of transmission is very much needed in vulnerable groups, especially the elderly group and is an adaptation of new habits carried out during the COVID-19 pandemic phase. The elderly need adaptation that is not easy, when compared to other age groups who are not vulnerable. These adaptations are intrapersonal adaptation, structural adaptation, and functional adaptation (4). Elderly adaptation to a change is influenced by internal factors and external factors. Internal factors are the main factors that affect the elderly, such as age, gender, and motivation. External factors are secondary factors that come from outside the elderly, such as changes in environmental conditions, education, work, and support from family (5).

Changes in environmental conditions throughout the pandemic phase to the COVID-19 endemic transition have had a physical and psychological impact on the elderly. The elderly must survive in a high-risk physical condition to avoid viral infections and poor prognosis of accompanying diseases (6). On the other hand, research shows that during the pandemic the elderly experience psychological problems such as loneliness, anxiety, an increased risk of depression (7). These two physical and psychological conditions affect the psychological well being of the elderly. Psychological well being is defined as an individual's effort to improve and fulfill one's potential, be able to face challenges, make efforts to overcome problems and achieve valuable life goals. (8). Several studies have shown that good psychological well-being in the elderly contributes to the ability of the elderly to overcome problems, make decisions, and make

the elderly feel satisfied with their lives. Based on the phenomena and perspectives that have been described, this study aims to evaluate the adaptation readiness of the elderly in the transition period of the COVID-19 pandemic based on the psychological well-being experienced by the elderly..

2. MATERIALS AND METHODS

2.1. Research Design

This research method used a descriptive analytic design with a cross-sectional approach.

2.2. Population, Sample and Sampling

The population of this study was the elderly who were in Jember Regency. The sample of this research was the elderly who were in Sukorambi and Kalisat Districts, Jember Regency with a total sample of 102 elderly. Respondents were obtained by first looking at the inclusion criteria and then given informed consent. The sampling technique used multistage sampling.

2.3. Data Collection and Analysis

The data was collected using a psychological well being questionnaire and a modified adaptation questionnaire. The analysis of the data in this study used Spearman with alpha <0.05.

3. RESULTS

3.1. Sample Characteristics

Respondents in this study consisted of 102 elderly respondents with the following characteristics:

Most of the respondents were women (75.5%) aged 55 to more than 65 years (41.2%). The majority of the elderly live with their families (71.6%) with married and widowed status (48%). The majority of respondents' education is junior high school (38%). Farmers work (34.3%) with income less than the minimum wage (84.3%). The results of the evaluation

TABLE 1: Sample Characteristics.

Characteristics	Frequency	Percentage
Age 46-55 y.o 55-65 y.o >65 y.o	18 42 42	17,6% 41,2% 41,2%
Total	102	100%
Gender Male Female	25 77	24,5% 75,5%
Total	102	100%
Residence Alone With Family	29 73	28,4% 71,6%
Total	102	100%
Education Never Primary School Junior High School Senior High School Bachelor/Diploma	15 30 38 7 12	14,7% 29,4% 37,3% 6,9% 11,8%
Total	102	100%
Occupation Civil Entrepreneur unemployement Servant farmer Employee labor	4 3 10 35 17 33	3,9% 2,9% 9,8% 34,3% 16,7% 32,4%
Total	102	100%
Marital Status Married Widowed Divorced	49 49 4	48% 48% 3,9%
Total	102	100%
Income < UMR > UMR	86 16	84,3% 15,7%
Total	102	100%
Covid History Once Never	22 82	21,6% 78,4%
Total	102	100%
Vaccine Status Not Vaccinated Dosis 1 Dosis 2	23 27 52	22,5% 26,5% 51%
Total	102	100%

of the history of COVID 19, as many as 78.4% have never been infected with covid with the status of dose 2 vaccine.

3.2. Adaptation Readiness

TABLE 2: Adaptation Readiness (N=102).

Kesiapan Adaptasi	Frequency	Percentage
Good	31	30,4%
Quite	41	40, 2%
Less	30	29,4%
Total	102	100%

Elderly adaptation readiness is categorized into 3 categories. Based on the data, it is known that most of the respondents (40.2%) are in the sufficient category in readiness to adapt.

3.3. Psychological Well Being

Psychological well-being is classified into 3 categories, namely high, medium, and low.

TABLE 3: Psychological Well Being (N=102).

Psychological Well Being	Frequency	Percentage
High	33	32, 4%
Moderate	40	39, 2%
Low	29	28, 4%
Total	102	100%

The results of data identification showed that the respondent’s psychological well being condition during the pandemic was in moderate condition (39.2%)

3.4. Evaluation of Adaptation Readiness with Psychological Well Being

TABLE 4: Evaluation of Adaptation Readiness with Psychological Well Being (N=102)

Adaptation Readiness	Psychological Well Being			Total	r	p
	High	Moderate	Low			
	N	N	N		0,503	0,000
Good	20	10	1	31		
Enough	8	22	11	41		
Less	5	8	17	30		
Total	33	40	29	102		

Based on the results of the analysis, it is known that there is a significant relationship between the adaptation readiness of the elderly with the condition of psychological well being ($0.000 < 0.005$) with a correlation coefficient of 0.0503 which shows the correlation of the two variables in the moderate category. The majority of respondents showed good adaptation readiness supported by good psychological well being conditions.

4. DISCUSSION

The pandemic transition forces the elderly as a vulnerable group to adapt. In this study, adaptation readiness was defined as the ability of the elderly to adjust the pandemic transition period which includes emotional stability in dealing with problems, the ability to solve problems based on rational considerations, realistic and objective attitudes in

problem solving, desire to learn, and ability to learn from experience. The results showed the adaptation value in the elderly was quite, so the elderly were able to adapt quite well during the pandemic transition. This can be supported by the factor of respondents living with their families. The results of research conducted by (9) said that there was a significant relationship between family support and the quality of life of the elderly. The Elderly who receive support and live with their family have a good level of adaptability and affect the quality of life, both physically, psychologically and spiritually (9). Thus, living with family was an important factor in the adaptation of the elderly during the pandemic transition.

Psychological well being in this study was defined as the psychological condition of the elderly who were prosperous during the pandemic transition. Psychological well being in this study includes the ability of the elderly in overcoming problems, making decisions, and satisfaction with their lives. The results showed that the psychological well being in the elderly was moderate, it means the elderly have sufficient psychological well-being. Based on the demographic factors of the elderly, it can be influenced by gender. The results of the study found the majority of the elderly were female. This corresponds to (10) which states that women have better psychological well-being than men. Women have a mindset that influences good coping strategies than men, besides that women were easier to express feelings and enjoy establishing relationships with other people. Thus, gender was an important factor in the psychological well being of the elderly during the pandemic transition.

Psychological well being in this study was also influenced by the factor of living with family. Families can be provide social support in the form of emotional, instrumental, communication, and reward support (11). High social support can improve health and well-being in individuals as indicated by an increase in physical health, a decrease in depression, and a decrease in loneliness. Thus, living with family is an important factor in the psychological well-being of the elderly during the transition period of the pandemic.

The results showed that there was a significant relationship between psychological well-being and the adaptation readiness of the elderly during the pandemic transition. These results mean the elderly with good psychological well-being can increase the adaptation readiness during the pandemic transition period. The results of this study were in accordance with the results of the study (12) who said that psychological Well Being was significantly related to individual adaptability. The most influential factor was good relations and communication (12). Good relations and communication can affect the ability to adapt to the environment and as a means for self-development. Thus, that

good psychological well-being can increase the adaptation readiness of the elderly during the pandemic transition.

The other factors that influence the relationship between psychological well-being and adaptation were elderly who living with their families, elderly who have never been infected with Covid-19, and elderly who have received the 2nd dose of vaccine. These results were in accordance with (13) research which there was a relationship between family support for the elderly in the implementation of the COVID-19 vaccination. The support provided by the family can not only prevent the occurrence of Covid-19, but also improve the psychological well-being of the elderly by obtaining accurate and appropriate information, besides that the support provided can prevent stress in the elderly so that immunity remains optimal. Thus, the factors of living with family, never being infected with COVID-19, and implementing vaccinations can increase the adaptation readiness of the elderly during the pandemic transition period.

5. CONCLUSION

Psychological well being relates to the adaptation readiness of the elderly during the pandemic transition. The influencing factors were living with family, gender, never being Covid-19 infected, and have received a 2nd dose of Covid-19 vaccination. The family was the main support for the elderly during the pandemic transition period, so the elderly were able to adapt with the situations and prevent stress due to Covid-19.

ACKNOWLEDGMENTS

Thanks to Lembaga Penelitian dan Pengabdian Masyarakat (LPPM) Universitas Muhammadiyah Jember for financial support to this research. Thank you to Fakultas Ilmu Kesehatan Universitas Muhammadiyah Jember for giving us the opportunity and permission to participate in the 2nd ICMEDH. Thanks to all parties involved in the process of writing, analyzing, and collecting data on this research.

References

- [1] Peltz JS, Daks JS, Rogge RD. Mediators of the association between COVID-19-related stressors and parents' psychological flexibility and inflexibility: the roles of perceived sleep quality and energy. *J Contextual Behav Sci.* 2020 Jul;17:168–76.

- [2] Nurita D. Indonesia Mulai Transisi dari Pandemi Covid-19 Menuju Endemi - Nasional Tempo.
- [3] Kosinska M. COVID-19 response efforts in European cities: towards the new normal City Science Initiative. 2020.
- [4] Haryadi AY, Dewi AN, Pradana D, Ricardo J, Salsabilah M, Syahputra MA, et al. Upaya Edukasi Untuk Beradaptasi Pada Kebijakan New Normal Dan Meningkatkan Imunitas Tubuh Selama Pandemi Covid-19 Melalui Kegiatan Seminar Online Education for New Normal Adaptation and Improving Body Immunity During Covid-19 Pandemic Through Online. *Jurnal Layanan Masyarakat*. 2020;4(2):441–7.
- [5] Mujiadi D, Mawaddah N, Studi Keperawatan P, Tinggi Ilmu Kesehatan Majapahit S. Peningkatan Kemampuan Adaptasi Lansia Dengan Terapi Kelompok. *J Kesehat dr Soebandi*. 2020 Apr;8(1):49–55.
- [6] Ouslander JG, Grabowski DC. COVID-19 in Nursing Homes: Calming the Perfect Storm. *J Am Geriatr Soc*. 2020 Oct;68(10):2153–62.
- [7] Savci C, Cil Akinci A, Yildirim Usenmez S, Keles F. The effects of fear of COVID-19, loneliness, and resilience on the quality of life in older adults living in a nursing home. *Geriatr Nurs*. 2021;42(6):1422–8.
- [8] López J, Perez-Rojo G, Noriega C, Carretero I, Velasco C, Martinez-Huertas JA, et al. Psychological well-being among older adults during the COVID-19 outbreak: a comparative study of the young-old and the old-old adults. 2020. *Int Psychogeriatr*. 2020 Nov;32(11):1365-1370. <https://doi.org/10.1017/S1041610220000964>.
- [9] Permata Sari Y, Ok Satria L. Hubungan Dukungan Keluarga Dengan Kualitas Hidup Lansia Osteoarthritis Di Wilayah Kerja Puskesmas Muaro Paiti Kecamatan Kapur Ix. *Pros Semin Kesehat Perintis E [Internet]*. 2018;1(1):2622–2256. Available from: <https://jurnal.stikesperintis.ac.id/index.php/PSKP/article/view/83>
- [10] Ryff CD, Keyes CL. The structure of psychological well-being revisited. *J Pers Soc Psychol*. 1995 Oct;69(4):719–27.
- [11] Yusselda M, Wardani IY. Dampak Dukunga Keluarga Terhadap Kualitas Hidup Lansia. *J Keperawatan Sekol Tinggi Ilmu Kesehat Kendal*. 2016;8(1):5.
- [12] Kinanti RR. Hubungan antara psychological well-being dengan penyesuaian diri istri tentara berpangkat tamtama dan bintara di batlyon 502 Jabung. Universitas Negeri Malang. Universitas Negeri Malang; 2020.
- [13] Qurrokhmah AA, Setiyani R, Kusumawa LH. Hubungan Dukungan Keluarga Dengan Kepatuhan Vaksinasi Covid-19 Pada Lansia. *Skripsi Thesis*. Universitas Jenderal Sudirman. 2020;2–3.