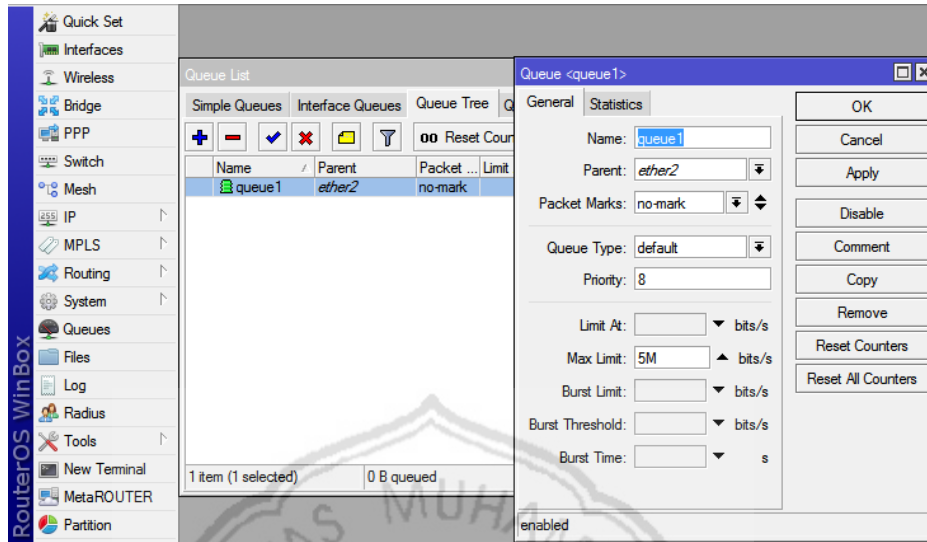
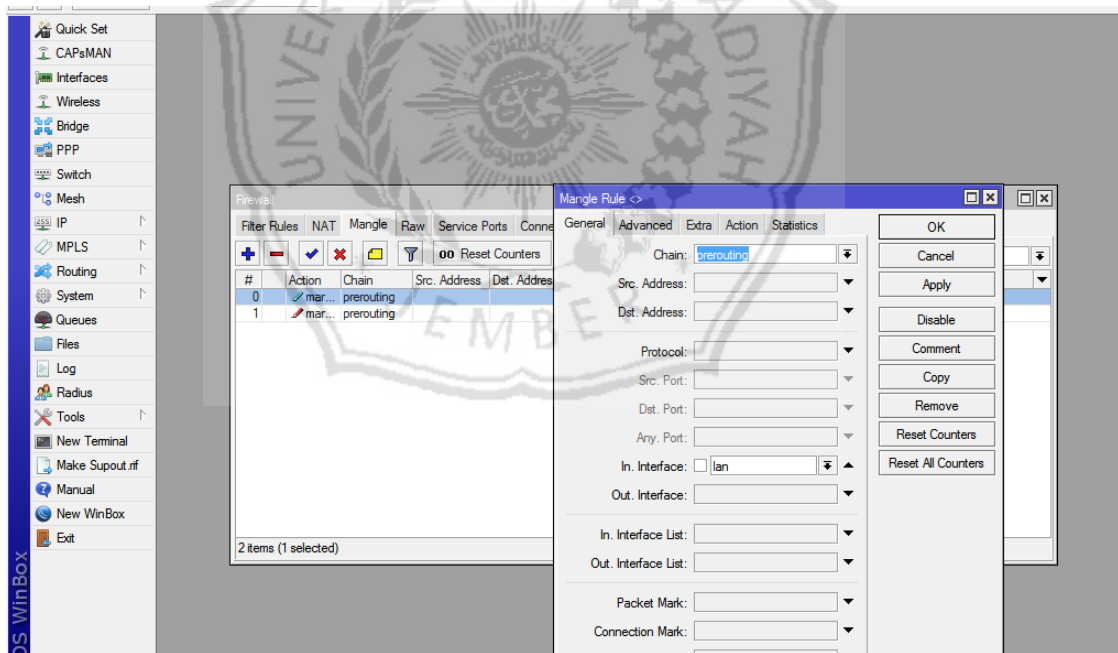


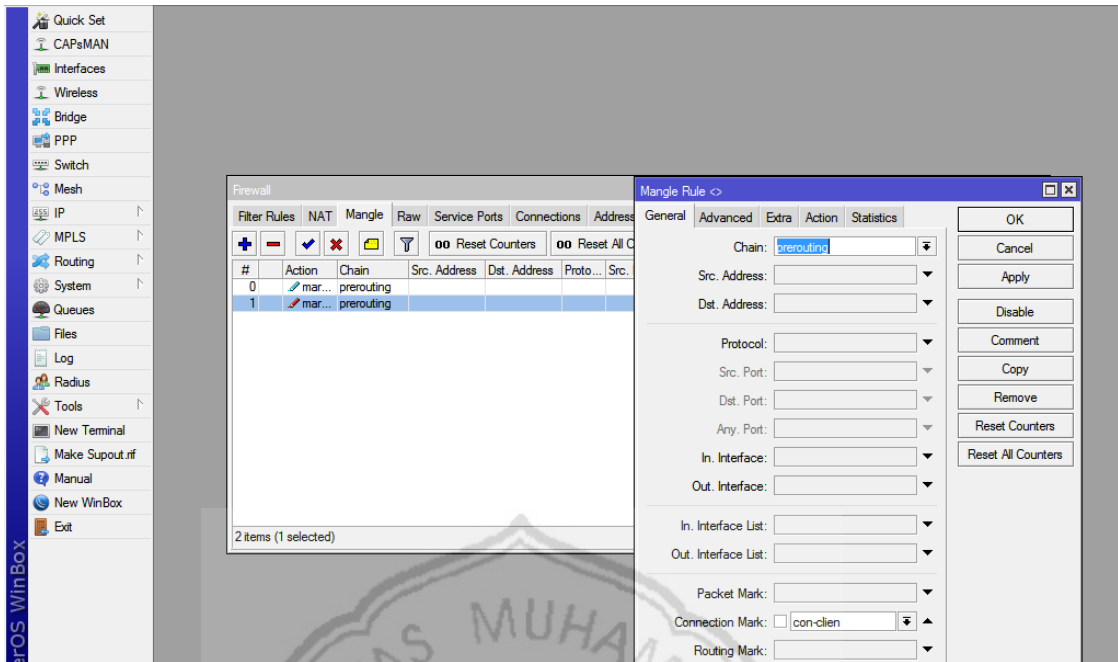
LAMPIRAN



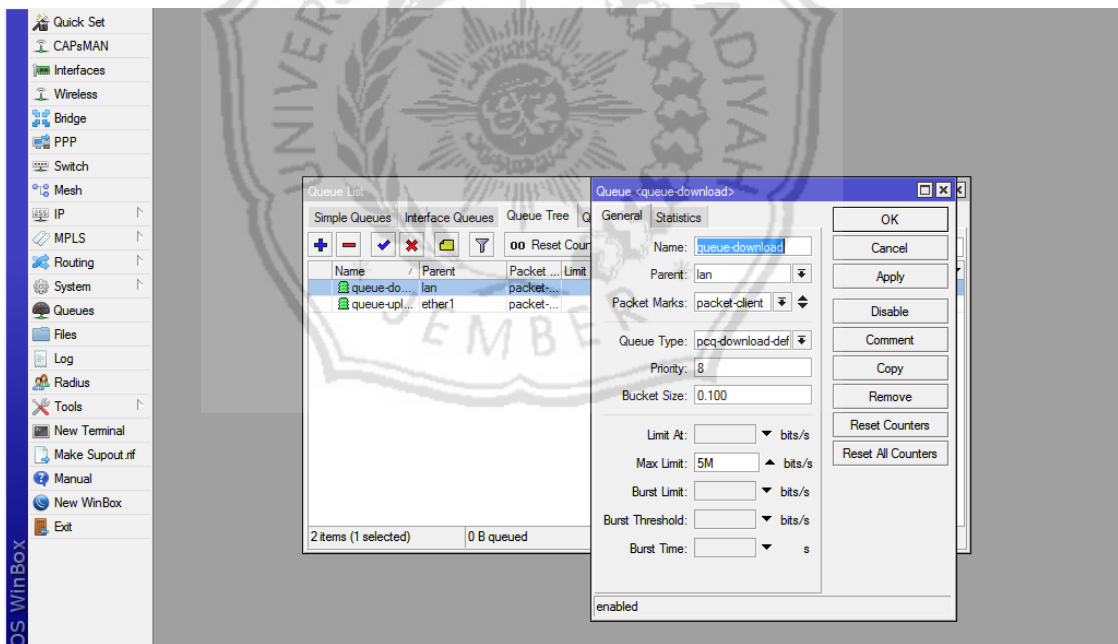
Gambar konfigurasi *Queue Tree Default*



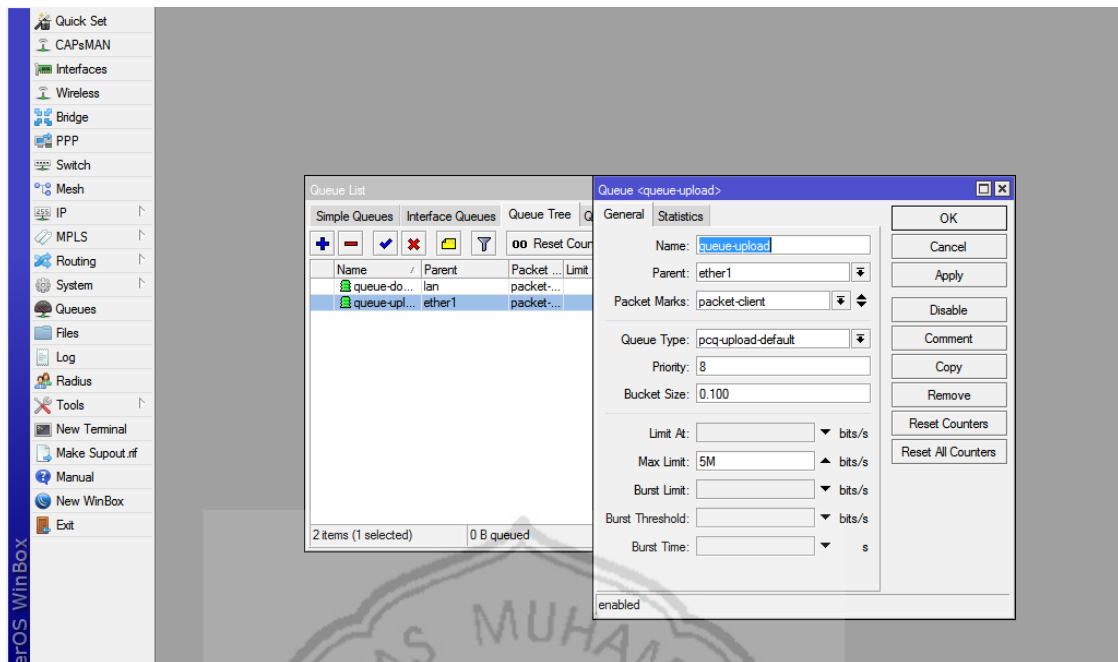
Gambar konfigurasi *Mangle 1 Queue Tree PCQ*



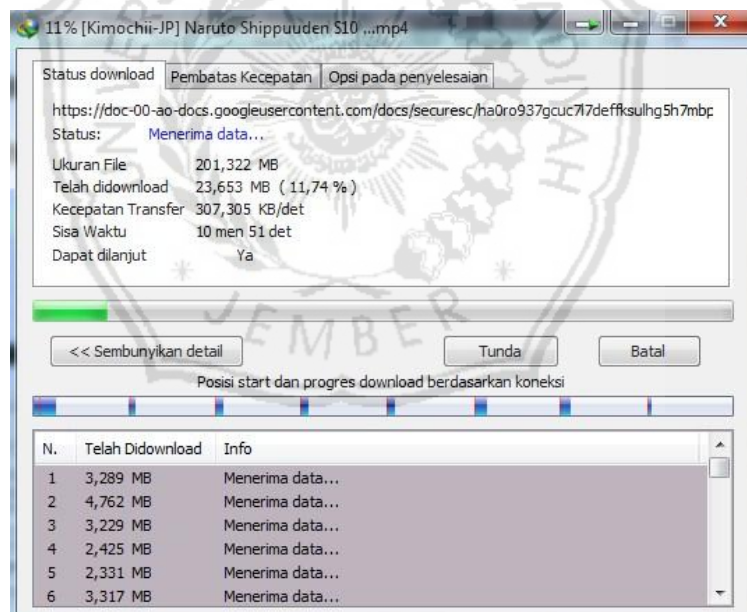
Gambar konfigurasi *Mangle 2 Queue Tree PCQ*



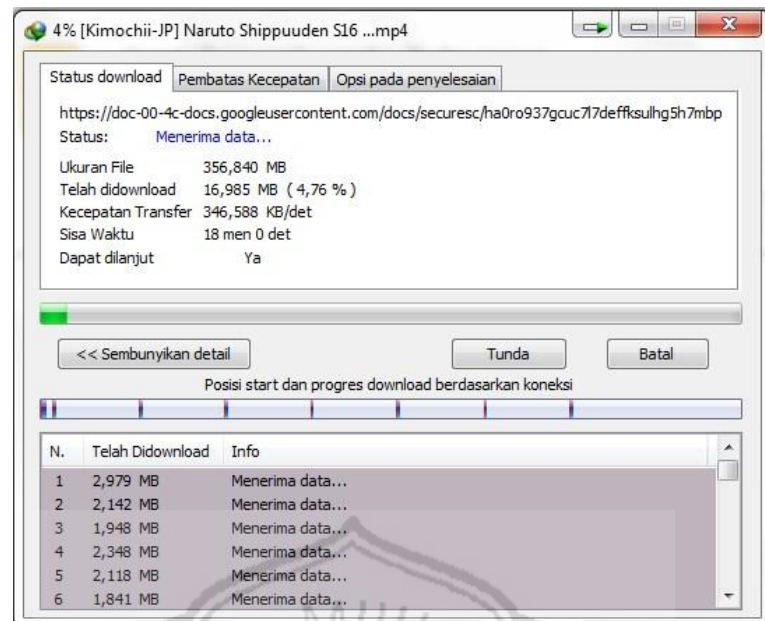
Gambar konfigurasi *download* pada *Queue Tree PCQ*



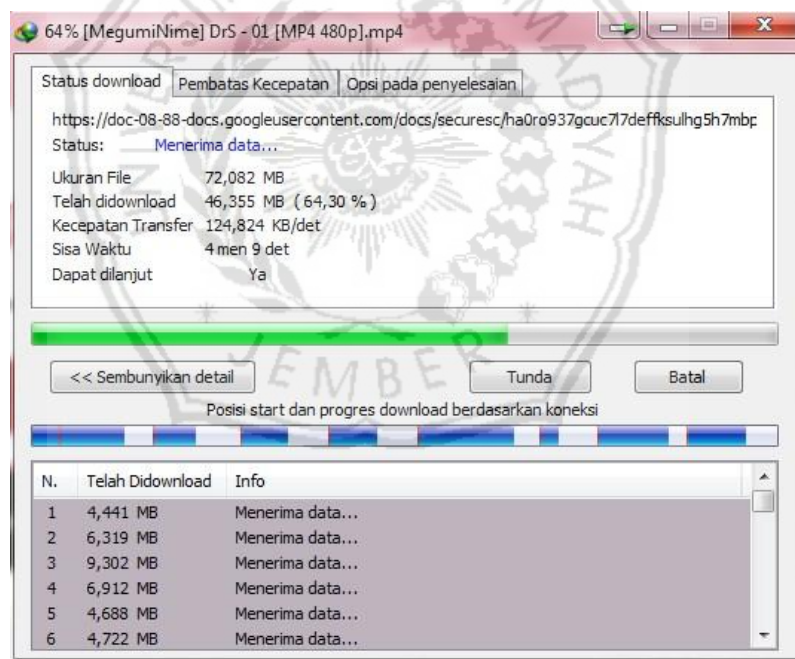
Gambar konfigurasi *upload* pada *Queue Tree PCQ*



Gambar *Capture Internet download manager* pada pengujian 1



Gambar *Capture internet download manager* pada pengujian 2



Gambar *Capture internet download manager* pada pengujian 3

Traffic	Captured	Displayed	Displayed %	Marked	Marked %
Packets	273784	273784	100.000%	0	0,000%
Between first and last packet	756,869 sec				
Avg. packets/sec	361,732				
Avg. packet size	822 bytes				
Bytes	224949411	224949411	100.000%	0	0.000%
Avg. bytes/sec	297210,357				
Avg. MBit/sec	2,378				

Gambar Capture Wireshark Queue Tree PCQ pengujian 1

Traffic	Captured	Displayed	Displayed %	Marked	Marked %
Packets	213721	213721	100.000%	0	0,000%
Between first and last packet	637,907 sec				
Avg. packets/sec	335,035				
Avg. packet size	873 bytes				
Bytes	186596164	186596164	100.000%	0	0.000%
Avg. bytes/sec	292513,205				
Avg. MBit/sec	2,340				

Gambar Capture Wireshark Queue Tree Default pengujian 1

Traffic	Captured	Displayed	Displayed %	Marked	Marked %
Packets	508412	508412	100.000%	0	0,000%
Between first and last packet	2767,970 sec				
Avg. packets/sec	183,677				
Avg. packet size	817 bytes				
Bytes	415364248	415364248	100.000%	0	0.000%
Avg. bytes/sec	150060,971				
Avg. MBit/sec	1,200				

Gambar Capture Wireshark Queue Tree PCQ pengujian 2

Traffic	Captured	Displayed	Displayed %	Marked	Marked %
Packets	408012	408012	100.000%	0	0,000%
Between first and last packet	2598,389 sec				
Avg. packets/sec	157,025				
Avg. packet size	975 bytes				
Bytes	397831290	397831290	100.000%	0	0.000%
Avg. bytes/sec	153106,873				
Avg. MBit/sec	1,225				

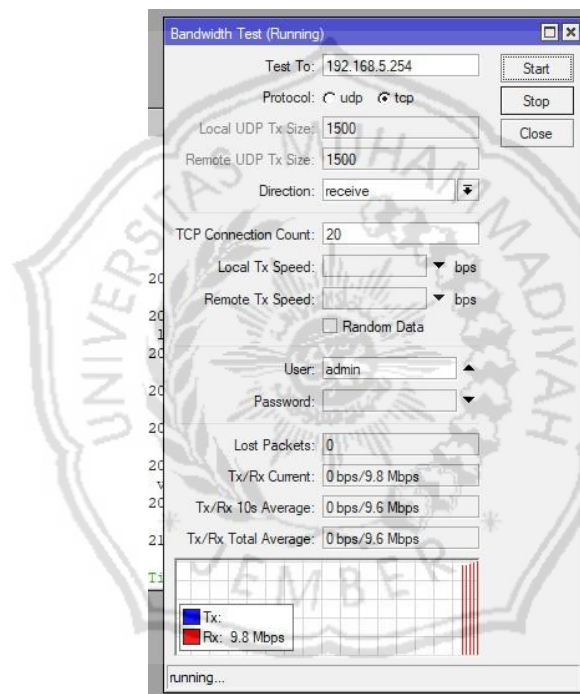
Gambar Capture Wireshark Queue Tree Default pengujian 2

Traffic	Captured	Displayed	Displayed %	Marked	Marked %
Packets	107196	107196	100.000%	0	0,000%
Between first and last packet	743,303 sec				
Avg. packets/sec	144,216				
Avg. packet size	791 bytes				
Bytes	84789951	84789951	100.000%	0	0.000%
Avg. bytes/sec	114071,814				
Avg. MBit/sec	0,913				

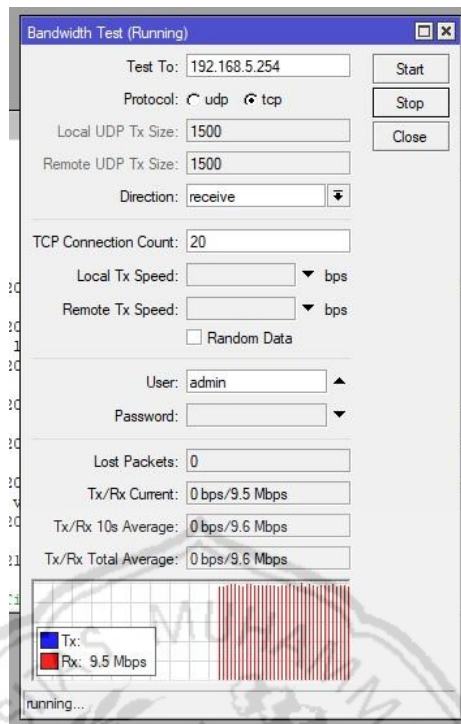
Gambar Capture Wireshark Queue Tree PCQ pengujian 3

Traffic	Captured	Displayed	Displayed %	Marked	Marked %
Packets	103660	103660	100.000%	0	0,000%
Between first and last packet	802,079 sec				
Avg. packets/sec	129,239				
Avg. packet size	894 bytes				
Bytes	92710742	92710742	100.000%	0	0.000%
Avg. bytes/sec	115588,006				
Avg. MBit/sec	0,925				

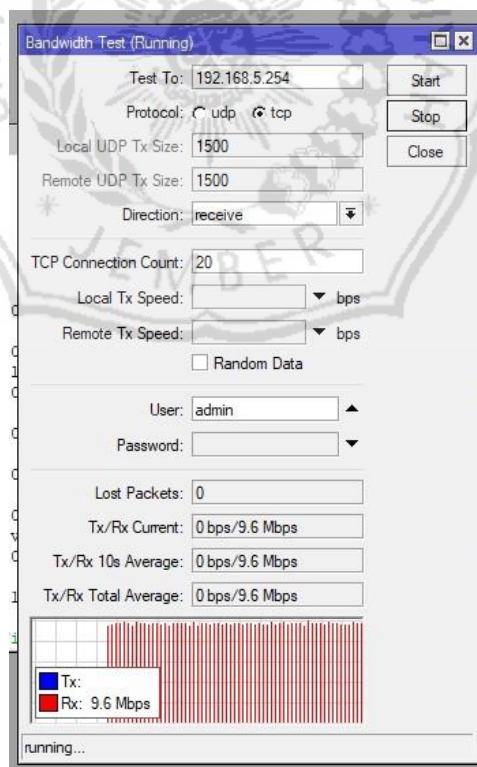
Gambar *Capture Wireshark Queue Tree Default* pengujian 3



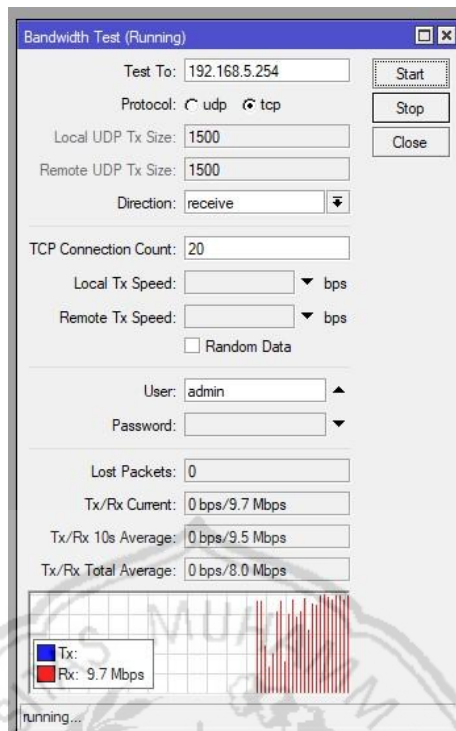
Gambar *Bandwidth Queue Tree PCQ* pada pengujian 1



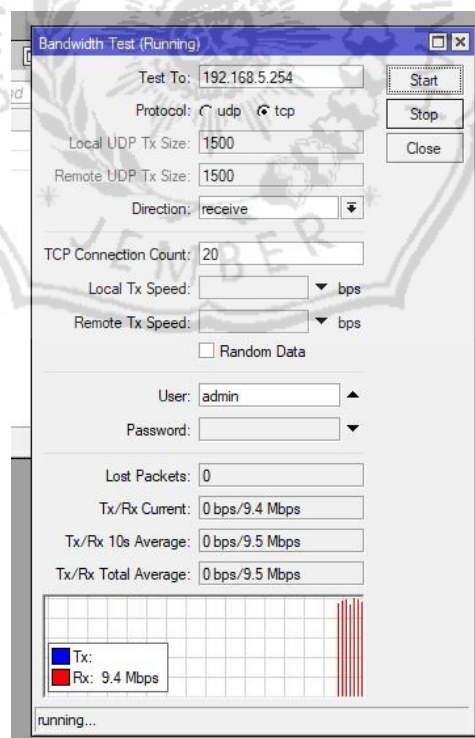
Gambar *Bandwidth Queue Tree PCQ* pada pengujian 2



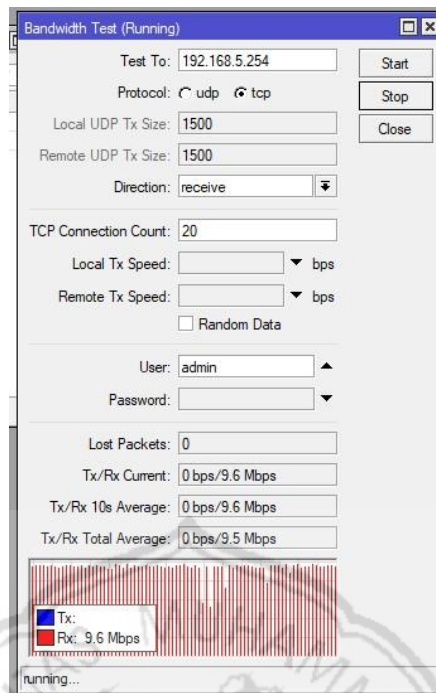
Gambar *Bandwidth Queue Tree PCQ* pada pengujian 3



Gambar *Capture Bandwidth Queue Tree Default* pada pengujian 1



Gambar *Capture Bandwidth Queue Tree Default* pada pengujian 2



Gambar *Capture Bandwidth Queue Tree Default* pada pengujian 3