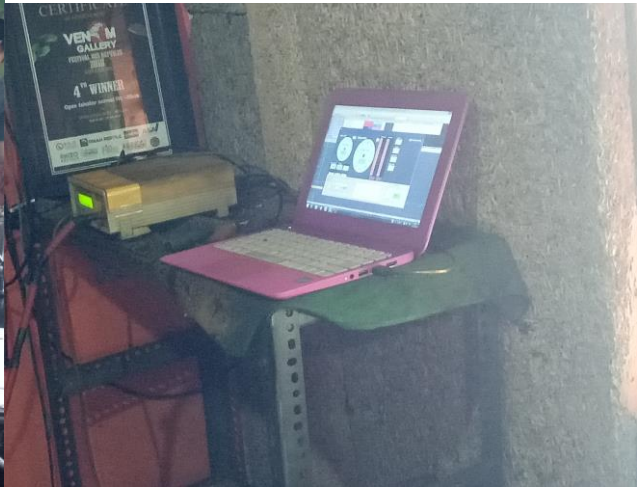
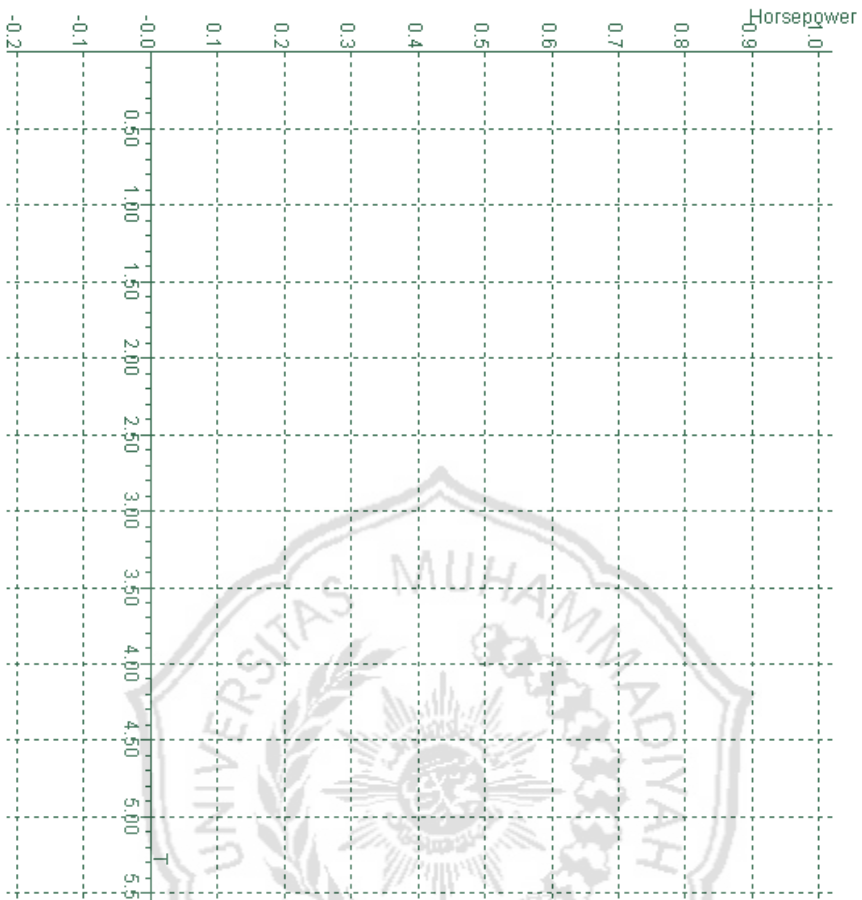


LAMPIRAN





Name: _____ HP/KMH: _____ N*/M/KMH: _____ KMH: _____ Temp. (°C): _____ Humidity (%): _____ Pressure (mbar): _____ Date/Time: _____



DATA FOR TEST: NVL MODAR 66MM027

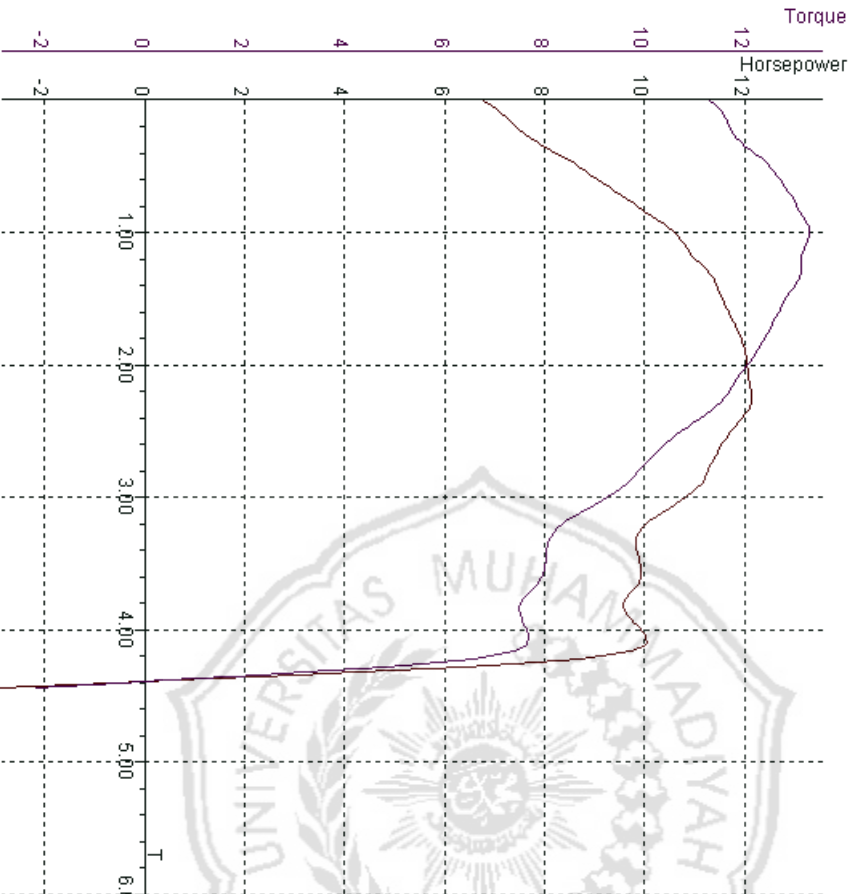
T (s)	HP (HP)	TQ (N*M)
0.20	7.0	5.78
0.40	7.1	5.81
0.60	7.2	5.84
0.80	7.3	5.87
1.00	7.3	5.89
1.20	7.7	5.98
1.40	8.4	6.17
1.60	9.3	6.40
1.80	10.0	6.57
2.00	10.2	6.58
2.20	10.5	6.54
2.40	11.0	6.50
2.60	11.2	6.33
2.80	11.4	6.14
3.00	11.2	5.84
3.20	11.4	5.70
3.40	11.6	5.60
3.60	11.1	5.60
3.80	10.9	5.17
4.00	10.6	4.94
4.20	10.5	4.53
4.40	10.1	4.24
4.60	9.7	4.01
4.80	9.8	3.94
5.00	9.9	3.91
5.20	9.5	3.68
5.40	9.0	3.45
5.60	9.1	3.40
5.80	8.8	3.27
6.00	8.5	3.09
6.20	3.4	1.24
6.40	-7.8	-2.82
6.60	0.0	0.00

WHEEL 11.6 HP 6.6 N*M
 LOSSES -10.6 HP -3.9 N*M
 TOTAL ENGINE: 22.2 HP 10.44 N*M



Sport Devices
WWW.SPORTDEVICES.COM

Name	MEGAPRO CDI BKT002	HP/KMH	12.1 / 3.26	N+M/KMH	13.30 / 1.98	KMH	94.7	Temp. (C)	35.0	Humidity (%)	80	Pressure (mbar)	1000.0	Date/Time	19/12/2018 10:27:19
------	--------------------	--------	-------------	---------	--------------	-----	------	-----------	------	--------------	----	-----------------	--------	-----------	---------------------

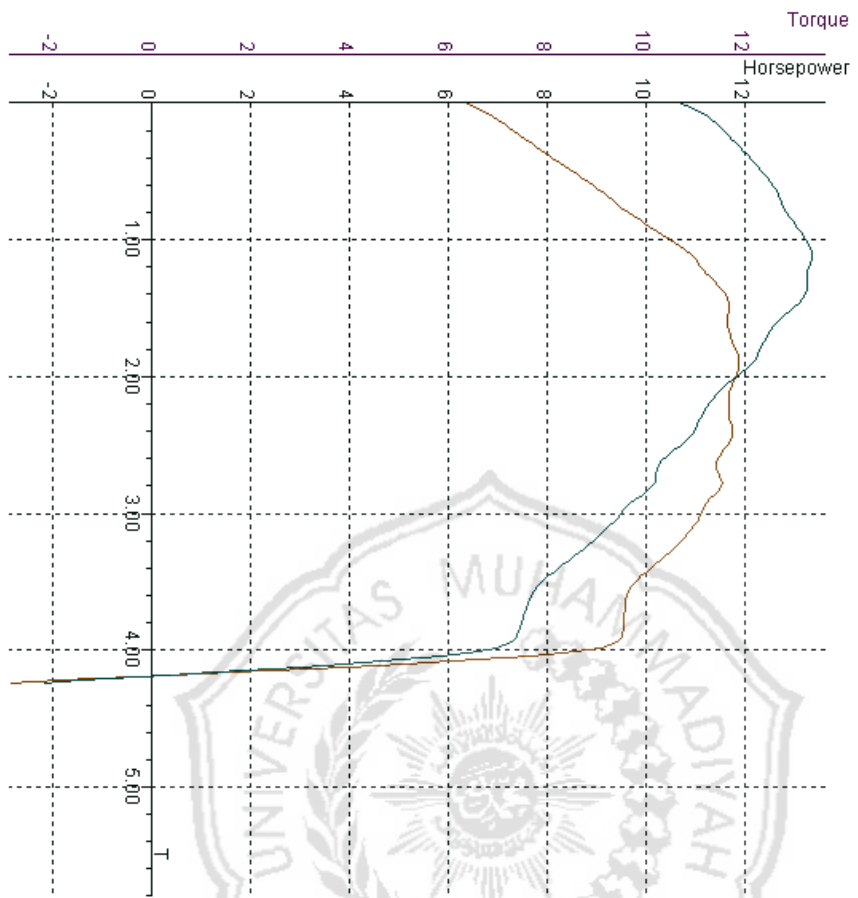


DATA FOR TEST: MEGAPRO CDI BKT002

T (g)	HP (HP)	TQ (N*M)
0.20	6.8	11.37
0.40	6.9	11.42
0.60	7.0	11.48
0.80	7.1	11.53
1.00	7.1	11.57
1.20	7.5	11.71
1.40	8.3	12.29
1.60	9.2	12.75
1.80	9.9	13.07
2.00	10.5	13.30
2.20	10.7	13.30
2.40	11.1	13.13
2.60	11.5	12.96
2.80	11.7	12.64
3.00	11.9	12.38
3.20	12.1	12.01
3.40	12.1	11.57
3.60	11.9	11.03
3.80	11.5	10.35
4.00	11.2	9.83
4.20	10.7	9.15
4.40	10.0	8.28
4.60	9.9	8.03
4.80	9.9	7.91
5.00	9.6	7.52
5.20	9.1	7.65
5.40	-0.6	6.90
5.60	0.0	-0.48
5.80	0.0	0.00

WHEEL: 12.1 HP 13.3 N*M
 LOSSES: -7.2 HP -5.4 N*M
 TOTAL ENGINE: 19.3 HP 18.74 N*M

Name: MEGAPRO CDI BRT003 | HP/KMH: 11.9 / 2.90 | N*/MKMH: 13.37 / 2.10 | KMH: 92.7 | Temp. (C): 35.0 | Humidity (%): 80 | Pressure (mbar): 1000.0 | Date/Time: 19/12/2018 10:27:35

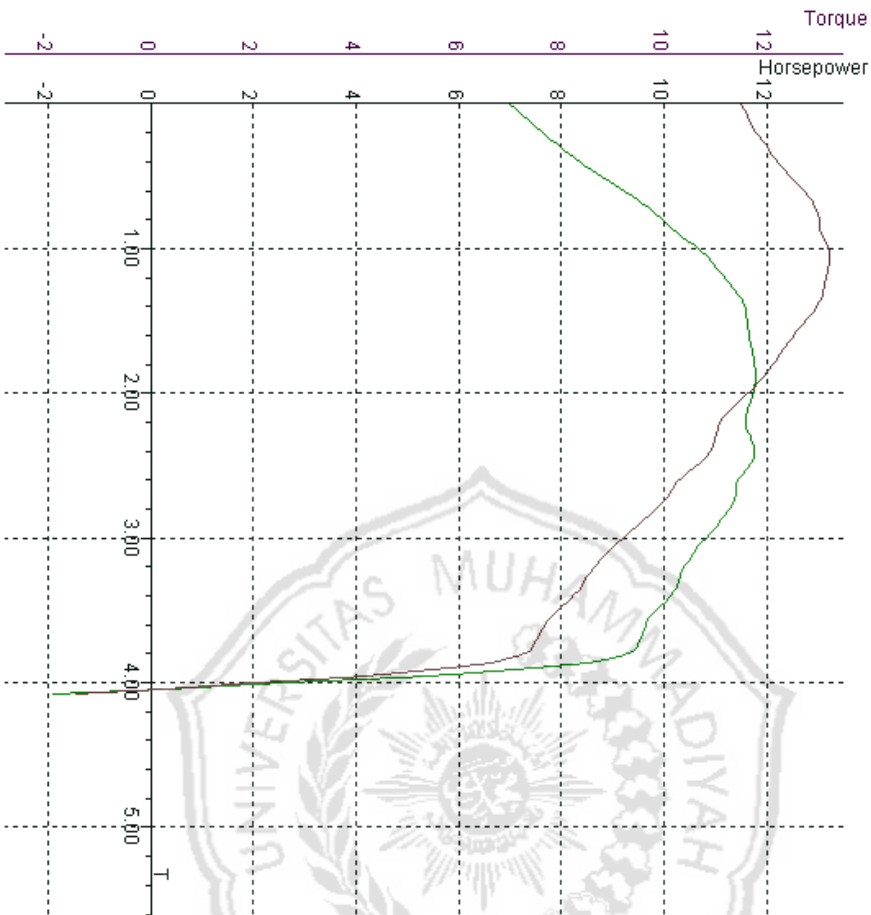


DATA FOR TEST: MEGAPRO CDI BRT003

T (g)	HP (HP)	TQ (N*M)
0.20	6.5	10.86
0.40	6.6	10.97
0.60	6.7	11.08
0.80	6.8	11.17
1.00	6.9	11.26
1.20	7.4	11.63
1.40	8.2	12.15
1.60	9.0	12.80
1.80	9.7	12.88
2.00	10.6	13.27
2.10	10.9	13.37
2.20	11.2	13.28
2.40	11.6	13.19
2.60	11.7	12.61
2.80	11.8	12.28
2.90	11.9	12.14
3.00	11.8	11.76
3.20	11.7	11.23
3.40	11.7	10.93
3.60	11.4	10.30
3.80	11.5	10.08
4.00	11.1	9.46
4.20	10.7	8.89
4.40	10.0	8.16
4.60	9.6	7.65
4.80	9.6	7.49
5.00	8.7	6.70
5.20	-0.7	-0.54
5.40	-8.1	-6.26
5.60	0.0	0.00

WHEEL: 11.9 HP 13.4 N*M
 LOSSES: -9.3 HP -7.2 N*M
 TOTAL ENGINE: 21.2 HP 20.61 N*M

Name	MEGAPRO CDI BRT004	HP/KMH	11.8 / 2.86	N*M/KMH	13.23 / 2.06	KMH	92.0	Temp. (°C)	35.0	Humidity (%)	80	Pressure (mbar)	1000.0	Date/Time	19/12/2018 10:27:5
------	--------------------	--------	-------------	---------	--------------	-----	------	------------	------	--------------	----	-----------------	--------	-----------	--------------------



DATA FOR TEST: MEGAPRO CDI BRT004

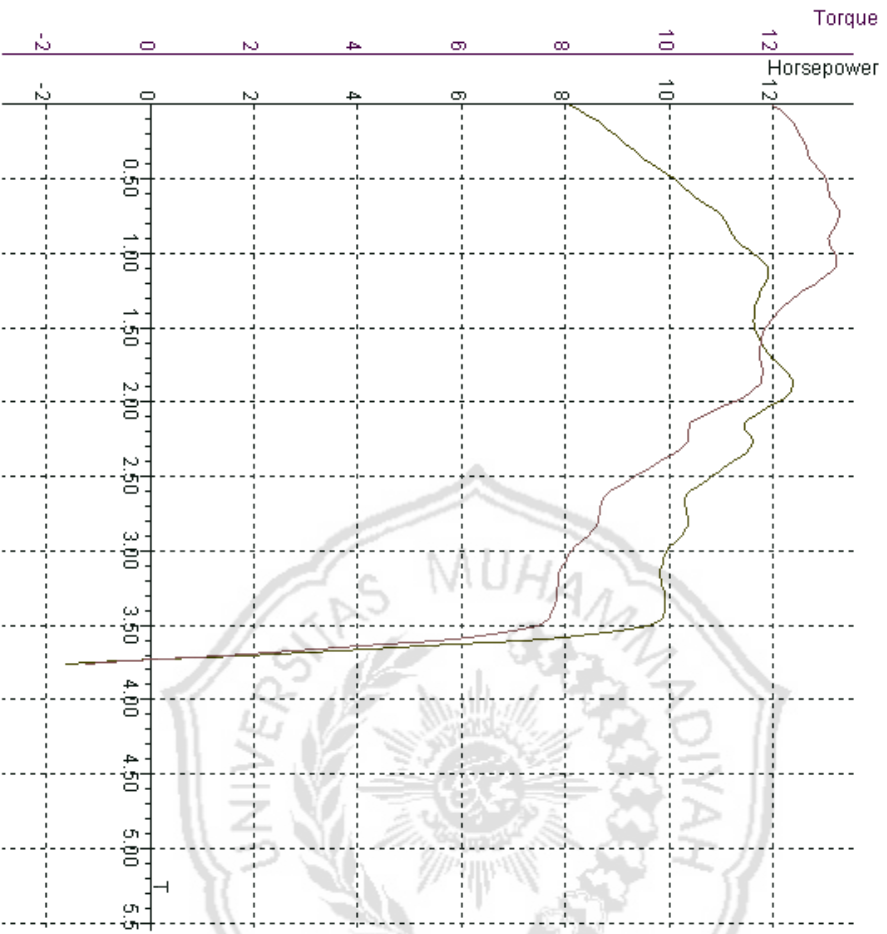
T (s)	HP (HP)	TQ (N*M)
0.20	7.1	11.52
0.40	7.1	11.55
0.60	7.2	11.58
0.80	7.2	11.61
1.00	7.3	11.63
1.20	7.7	11.83
1.40	8.4	12.26
1.60	9.3	12.78
1.80	10.0	13.02
2.00	10.7	13.22
2.06	10.9	13.23
2.20	11.2	13.14
2.40	11.6	12.94
2.60	11.7	12.47
2.80	11.8	12.07
2.86	11.8	11.99
3.00	11.7	11.57
3.20	11.6	11.05
3.40	11.8	10.86
3.60	11.4	10.22
3.80	11.2	9.77
4.00	10.8	9.13
4.20	10.4	8.58
4.40	10.1	8.17
4.60	9.6	7.64
4.80	9.3	7.24
5.00	2.6	2.04
5.20	-6.8	-5.29
5.40	0.0	0.00
5.60	0.0	0.00

WHEEL: 11.8 HP 13.2 N*M
 LOSSES: -9.0 HP -7.1 N*M
 TOTAL ENGINE: 20.8 HP 20.31 N*M



SportDevices
www.sportdevices.com

Name	MEGAPRO CDI BKT005	HP/KMH	12.4 / 2.90	N°/KMH	13.29 / 1.74	KMH	92.5	Temp. (C°)	35.0	Humidity (%)	80	Pressure (mbar)	1000.0	Date/Time	19/12/2018 10:28:18
------	--------------------	--------	-------------	--------	--------------	-----	------	------------	------	--------------	----	-----------------	--------	-----------	---------------------



DATA FOR TEST: MEGAPRO CDI BKT005

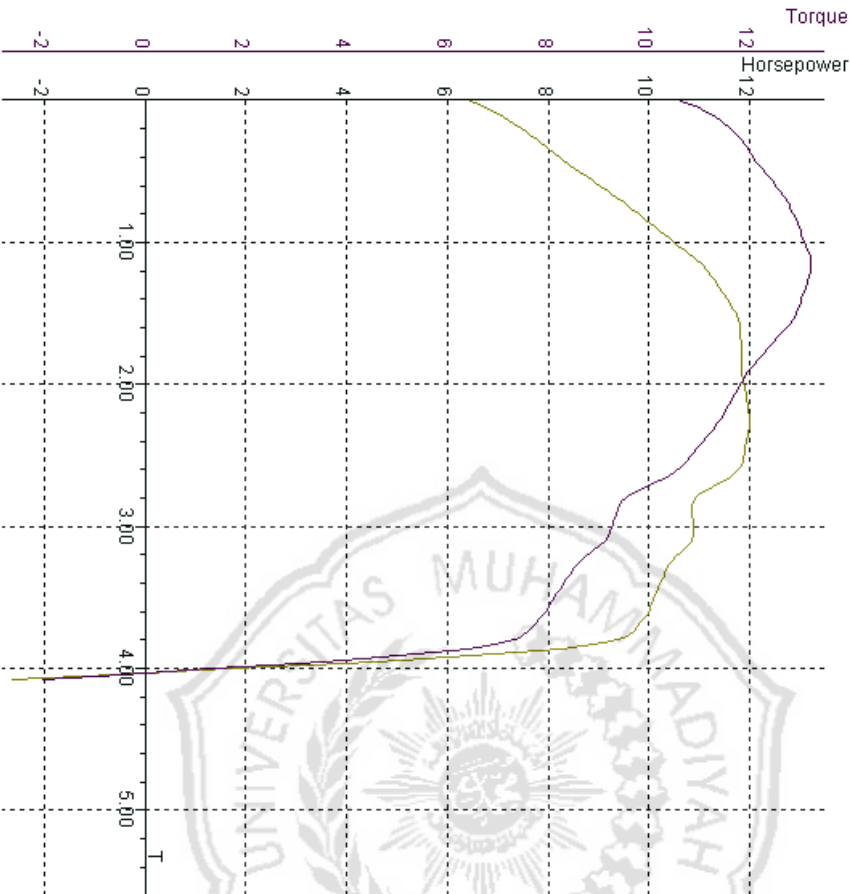
T (s)	HP (HP)	TQ (N*M)
0.20	8.2	12.08
0.40	8.3	12.14
0.60	8.4	12.21
0.80	8.5	12.27
1.00	8.6	12.33
1.20	9.0	12.54
1.40	9.8	12.84
1.60	10.5	13.10
1.74	11.0	13.29
1.80	11.1	13.18
2.00	11.7	13.20
2.20	11.8	12.73
2.40	11.6	12.02
2.60	11.8	11.75
2.80	12.3	11.81
2.90	11.69	11.69
3.00	12.0	11.10
3.20	11.5	10.36
3.40	11.1	9.71
3.60	10.3	8.78
3.80	10.3	8.60
4.00	9.9	8.07
4.20	9.9	7.85
4.40	9.9	7.72
4.60	6.3	4.88
4.80	-3.7	-2.81
5.00	0.0	-6.81
5.20	0.0	0.00
5.40	0.0	0.00

WHEEL: 12.4 HP 13.3 N*M
 LOSSES: -9.4 HP -7.4 N*M
 TOTAL ENGINE: 21.8 HP 20.73 N*M



Sport Devices
WWW.SPORTDEVICES.COM

Name	HP/KMH	N°/KMH	KMH	Temp. (°C)	Humidity (%)	Pressure (mbar)	Date/Time
MEGAPRO CDI BRT006	12.0 / 5.26	13.22 / 2.14	91.9	35.0	80	1000.0	19/12/2018 10:28:35



DATA FOR TEST: MEGAPRO CDI BRT006

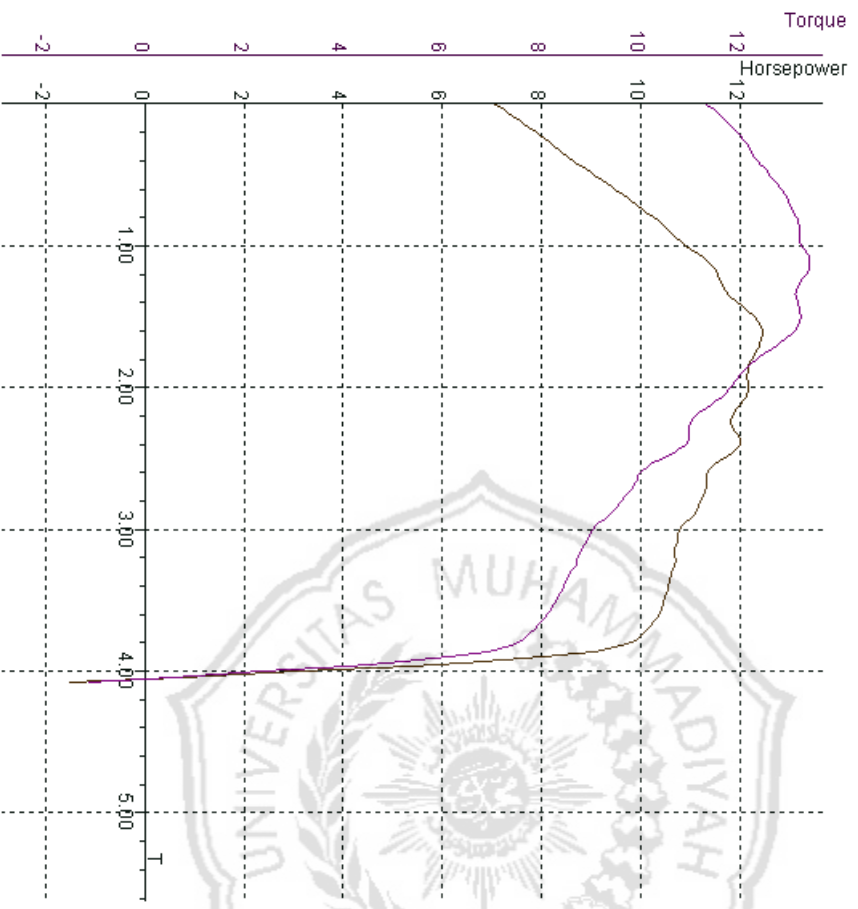
T (s)	HP (HP)	TQ (N°*M)
0.20	6.6	10.79
0.40	6.7	10.91
0.60	6.8	11.03
0.80	6.9	11.14
1.00	7.0	11.24
1.20	7.6	11.68
1.40	8.3	12.10
1.60	9.1	12.56
1.80	9.9	12.88
2.00	10.6	13.09
2.14	11.0	13.22
2.20	11.2	13.19
2.40	11.6	13.00
2.60	11.8	12.68
2.80	11.8	12.18
3.00	11.9	11.77
3.20	12.0	11.45
3.26	12.0	11.37
3.40	11.9	11.01
3.60	11.7	10.49
3.80	10.9	9.46
4.00	10.9	9.24
4.20	10.5	8.70
4.40	10.2	8.26
4.60	9.9	7.89
4.80	9.3	7.25
5.00	1.7	1.32
5.20	-7.0	-5.42
5.40	0.0	0.00

WHEEL 12.0 HP 13.2 N°*M
 LOSSES -8.6 HP -6.7 N°*M
 TOTAL ENGINE: 20.6 HP 19.94 N°*M



SportDevices
WWW.SPORTDEVICES.COM

Name	MEGAPRO CDI BRT007	HP/KMH	12.5 / 2.62	N+M/KMH	13.4 / 2.14	KMH	93.7	Temp. (C)	35.0	Humidity (%)	80	Pressure (mbar)	1000.0	Date/Time	19/12/2018 10:28:51
------	--------------------	--------	-------------	---------	-------------	-----	------	-----------	------	--------------	----	-----------------	--------	-----------	---------------------



DATA FOR TEST: MEGAPRO CDI BRT007

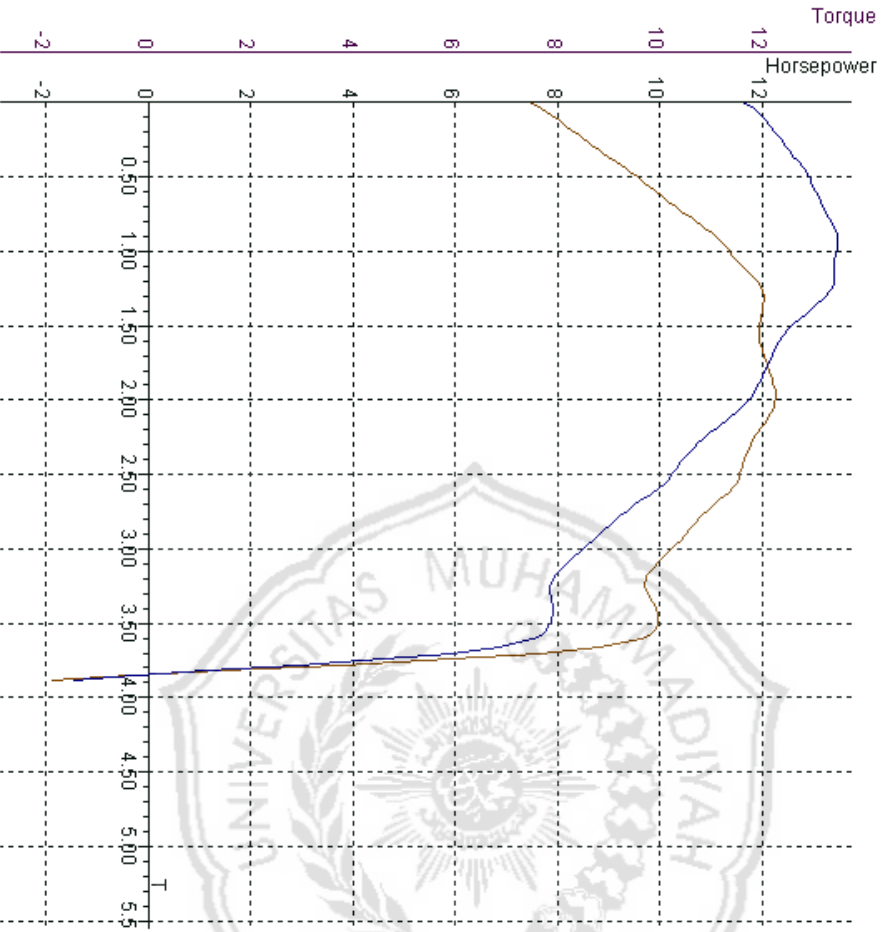
T (s)	HP (HP)	TQ (N*M)
0.20	7.2	11.43
0.40	7.2	11.49
0.60	7.3	11.55
0.80	7.4	11.61
1.00	7.5	11.67
1.20	8.0	12.00
1.40	8.7	12.40
1.60	9.6	12.88
1.80	10.3	13.17
2.00	11.0	13.28
2.14	11.4	13.41
2.20	11.6	13.28
2.40	12.0	13.18
2.60	12.5	13.04
2.62	12.5	13.04
2.80	12.2	12.26
3.00	12.2	11.76
3.20	11.8	11.05
3.40	12.0	10.85
3.60	11.3	9.95
3.80	11.2	9.56
4.00	10.8	8.98
4.20	10.7	8.72
4.40	10.5	8.41
4.60	10.3	8.06
4.80	9.8	7.49
5.00	3.1	2.37
5.20	-6.5	-4.97
5.40	0.0	0.00

WHEEL 12.5 HP 13.4 N*M
 LOSSES -7.1 HP -5.4 N*M
 TOTAL ENGINE: 19.5 HP 18.80 N*M



SportDevices
www.sportdevices.com

Name	HP/KMH	N°/KMH	KMH	Temp. (C°)	Humidity (%)	Pressure (mbar)	Date/Time
MEGAPRO CDI BKT008	12.3 / 2.98	13.47 / 1.90	92.4	35.0	80	1000.0	19/12/2018 10:29:08

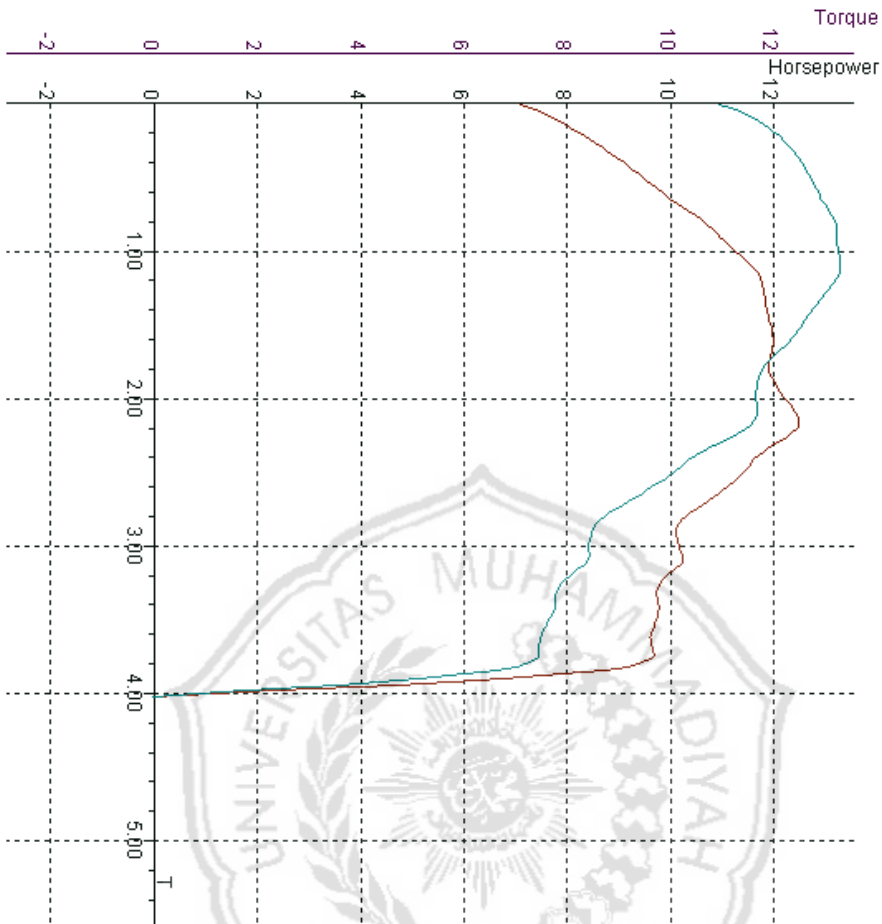


DATA FOR TEST: MEGAPRO CDI BKT008

T (s)	HP (HP)	TQ (N*M)
0.20	7.6	11.74
0.40	7.7	11.82
0.60	7.8	11.90
0.80	7.9	11.96
1.00	8.0	12.02
1.20	8.4	12.29
1.40	9.2	12.75
1.60	10.0	13.08
1.80	10.8	13.37
2.00	11.1	13.41
2.20	11.9	13.38
2.40	12.0	12.83
2.60	12.0	12.29
2.80	12.1	12.01
3.00	12.3	11.77
3.20	12.2	11.67
3.40	11.9	10.97
3.60	11.6	10.39
3.80	11.3	9.86
4.00	10.7	9.07
4.20	10.1	8.41
4.40	9.7	7.86
4.60	9.9	7.90
4.80	9.5	7.39
5.00	2.6	2.02
5.20	-6.7	-5.17
5.40	0.0	0.00

WHEEL: 12.3 HP 13.5 N*M
 LOSSES: -8.7 HP -6.9 N*M
 TOTAL ENGINE: 21.0 HP 20.33 N*M

Name	HP/KMH	RPM/KMH	KMH	Temp. (°C)	Humidity (%)	Pressure (mbar)	Date/Time
MEGAPRO CDI BRT009	12.5 / 3.14	13.29 / 2.10	93.8	35.0	80	1000.0	19/12/2018 10:29:24

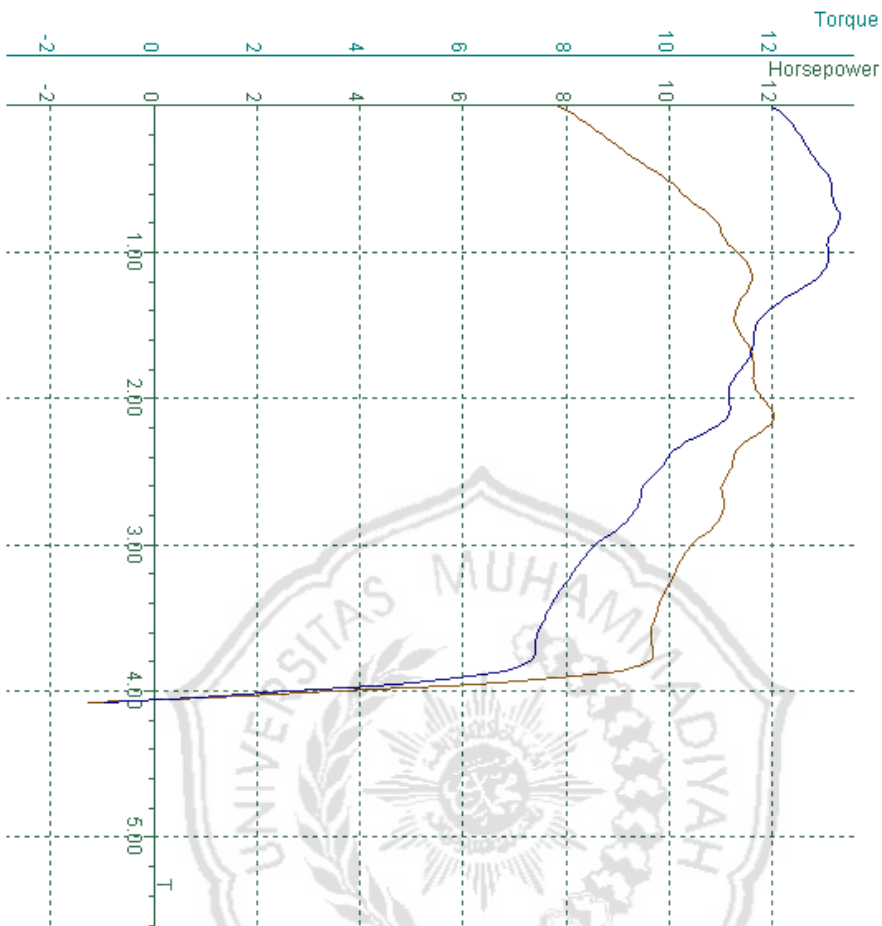


DATA FOR TEST: MEGAPRO CDI BRT009

T (s)	HP (HP)	TQ (N*M)
0.20	7.2	11.10
0.40	7.4	11.24
0.60	7.5	11.38
0.80	7.6	11.50
1.00	7.7	11.61
1.20	8.3	12.10
1.40	9.2	12.58
1.60	9.9	12.87
1.80	10.7	13.20
2.00	11.3	13.25
2.20	11.6	13.29
2.40	11.8	13.13
2.60	11.9	12.68
2.80	12.0	12.28
3.00	11.9	11.73
3.20	12.3	11.65
3.40	12.5	11.62
3.60	12.4	11.39
3.80	11.6	10.32
4.00	11.0	9.54
4.20	10.2	8.63
4.40	9.8	8.41
4.60	9.8	7.97
4.80	9.6	7.75
5.00	9.4	7.47
5.20	1.1	7.18
5.40	0.0	0.87
5.40	0.0	0.00

WHEEL: 12.5 HP 13.3 N*M
 LOSSES: -5.8 HP -4.4 N*M
 TOTAL ENGINE: 18.3 HP 17.68 N*M

Name	HP/KMH	RPM/KMH	KMH	Temp. (°C)	Humidity (%)	Pressure (mbar)	Date/Time
MEGAPRO CDI BRT	12.0 / 3.14	13.32 / 1.78	94.2	35.0	80	1000.0	19/12/2018 10:26:42

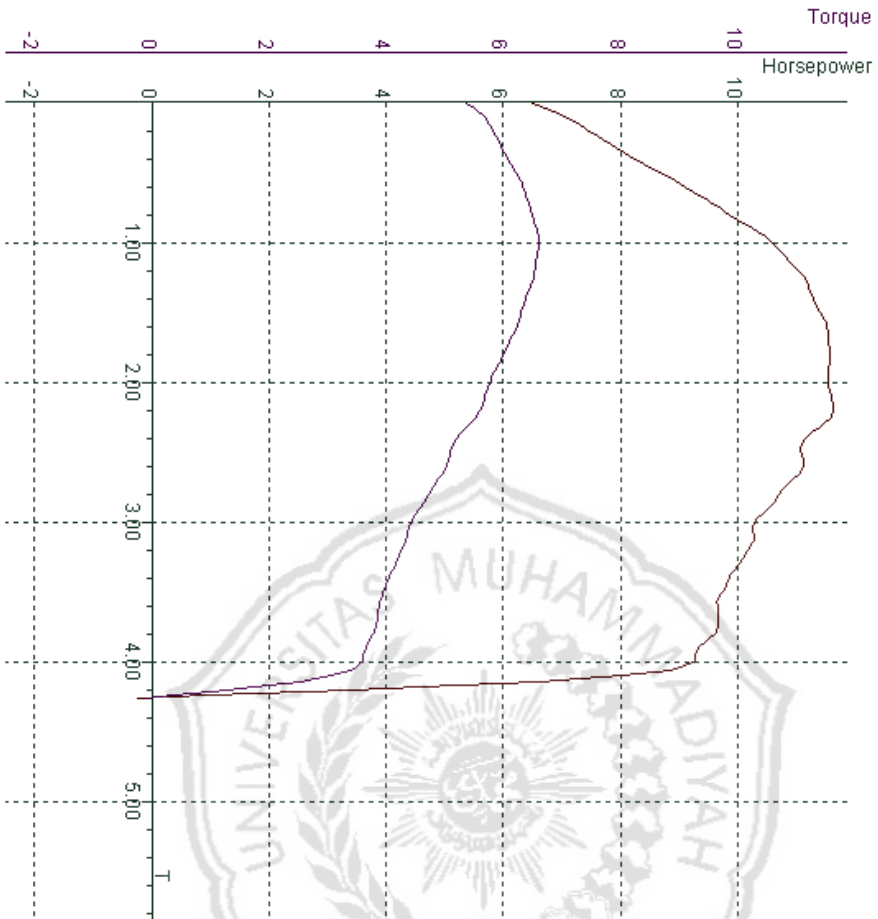


DATA FOR TEST: MEGAPRO CDI BRT

T (s)	HP (HP)	TQ (N*M)
0.20	8.0	12.09
0.40	8.1	12.16
0.60	8.2	12.22
0.80	8.2	12.27
1.00	8.3	12.32
1.20	8.8	12.56
1.40	9.6	12.94
1.60	10.3	13.15
1.78	10.9	13.32
1.80	11.0	13.26
2.00	11.4	13.08
2.20	11.6	12.70
2.40	11.3	11.86
2.60	11.5	11.63
2.80	11.6	11.34
3.00	11.8	11.16
3.14	12.0	11.10
3.20	11.8	10.75
3.40	11.2	9.94
3.60	11.0	9.47
3.80	11.0	9.21
4.00	10.4	8.50
4.20	10.1	8.07
4.40	9.8	7.68
4.60	9.6	7.43
4.80	9.6	7.25
5.00	3.5	2.64
5.20	-7.0	-5.24
5.40	0.0	0.00
5.60	0.0	0.00

WHEEL: 12.0 HP 13.3 N*M
 LOSSES: -9.9 HP -7.5 N*M
 TOTAL ENGINE: 21.9 HP 20.84 N*M

Name	HP/KMH	N*M/KMH	KMH	Temp. (°C)	Humidity (%)	Pressure (mbar)	Date/Time
MEGAPRO001	11.6 / 3.18	6.61 / 1.98	93.0	35.0	80	1000.0	19/12/2018 10:14:52

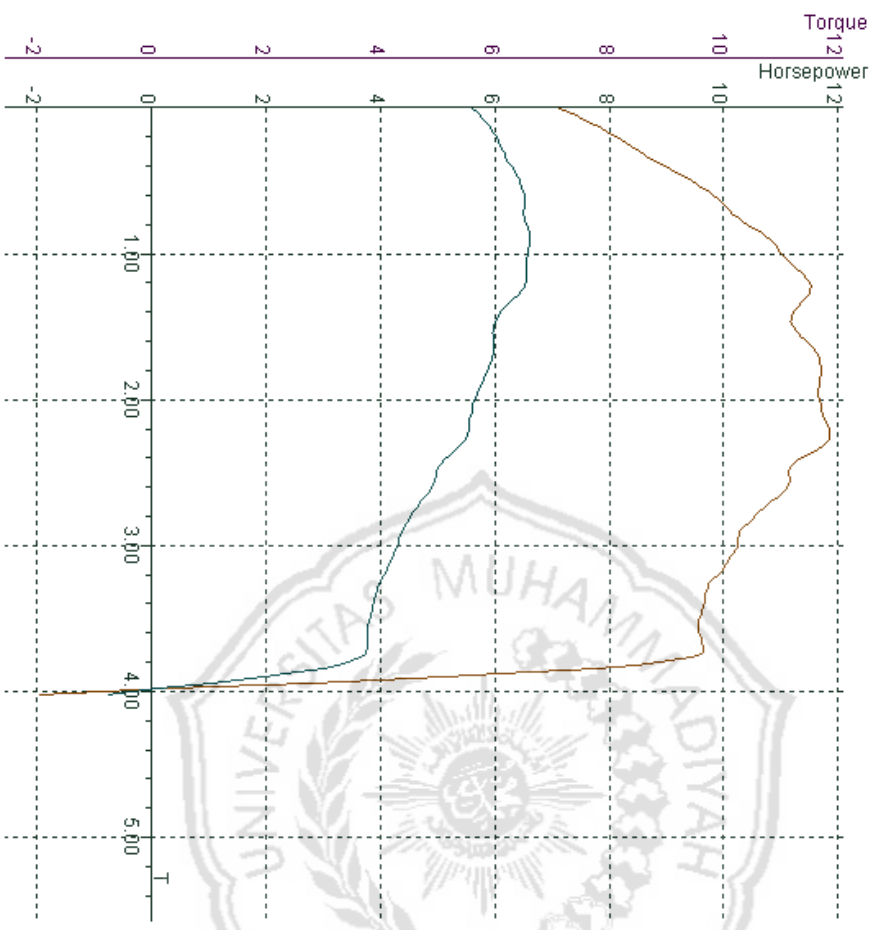


DATA FOR TEST: MEGAPRO001

T (s)	HP (HP)	TO (N*M)
0.20	6.6	5.45
0.40	6.7	5.51
0.60	6.8	5.57
0.80	6.9	5.62
1.00	7.0	5.67
1.20	7.5	5.86
1.40	8.3	6.10
1.60	9.2	6.35
1.80	9.9	6.50
2.00	10.5	6.61
2.20	10.6	6.60
2.40	11.1	6.53
2.60	11.3	6.35
2.80	11.5	6.21
3.00	11.6	5.97
3.18	11.6	5.74
3.20	11.6	5.62
3.40	11.6	5.58
3.60	11.1	5.16
3.80	11.1	5.01
4.00	10.7	4.68
4.20	10.3	4.39
4.40	10.1	4.24
4.60	9.8	4.02
4.80	9.7	3.87
5.00	9.6	3.78
5.20	9.2	3.57
5.40	3.4	1.30
5.60	-7.0	-2.68
5.80	0.0	0.00

WHEEL: 11.6 HP 6.6 N*M
 LOSSES: -9.5 HP -3.7 N*M
 TOTAL ENGINE: 21.2 HP 10.32 N*M

Name	HP/KMH	N*/MKMH	KMH	Temp. (°C)	Humidity (%)	Pressure (mbar)	Date/Time
MEGAPRO002	11.9 / 3.22	6.62 / 1.90	92.6	35.0	80	10000.0	19/12/2018 10:15:2
							3

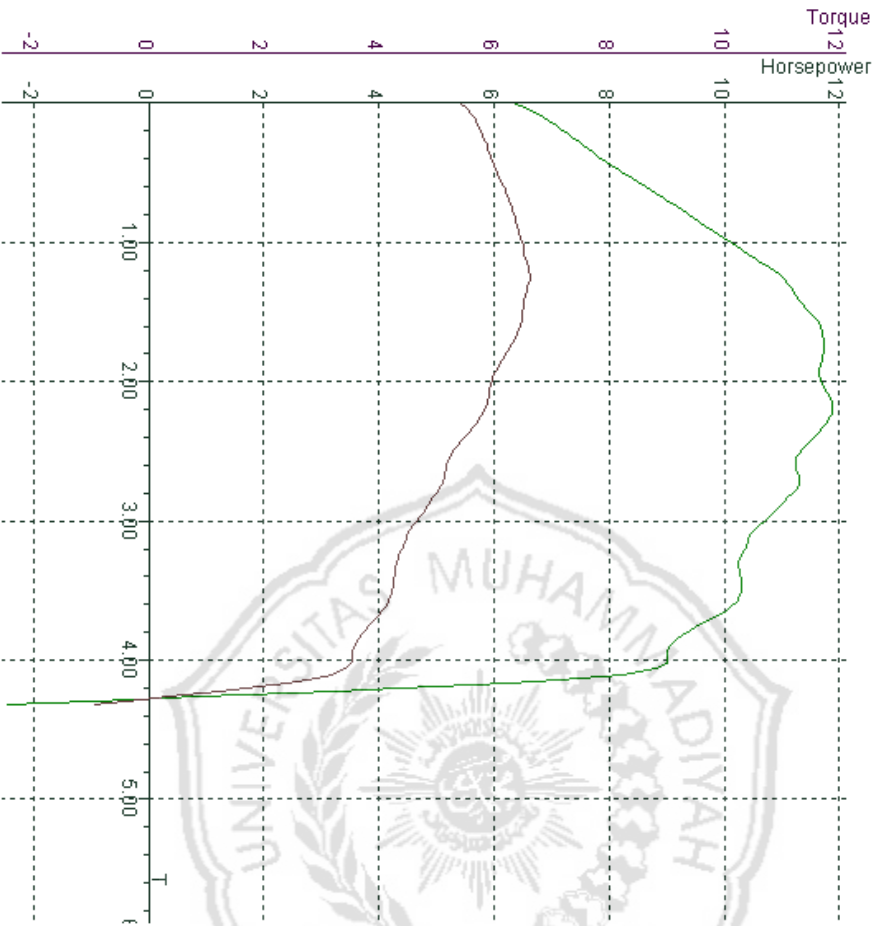


DATA FOR TEST: MEGAPRO002

T (s)	HP (HP)	TQ (N*M)
0.20	7.3	5.67
0.40	7.4	5.72
0.60	7.5	5.76
0.80	7.6	5.81
1.00	7.7	5.85
1.20	8.2	6.06
1.40	9.1	6.32
1.60	9.9	6.53
1.80	10.5	6.57
2.00	10.8	6.62
2.20	11.0	6.56
2.40	11.5	6.52
2.60	11.2	6.06
2.80	11.5	5.98
3.00	11.7	5.85
3.20	11.9	5.64
3.40	11.9	5.54
3.60	11.3	5.10
3.80	11.1	4.88
4.00	10.5	4.50
4.20	10.2	4.28
4.40	9.8	4.04
4.60	9.6	3.87
4.80	9.6	3.78
5.00	-0.8	-0.31
5.20	0.0	0.00
5.40	0.0	0.00

WHEEL: 11.9 HP 6.6 N*M
 LOSSES: -7.8 HP -3.0 N*M
 TOTAL ENGINE: 19.7 HP 9.65 N*M

Name	HP/KMH	N*M/KMH	KMH	Temp. (°C)	Humidity (%)	Pressure (mbar)	Date/Time
MEGAPRO003	11.9/3.18	6.62/2.22	92.8	35.0	80	1000.0	19/12/2018 10:15:57

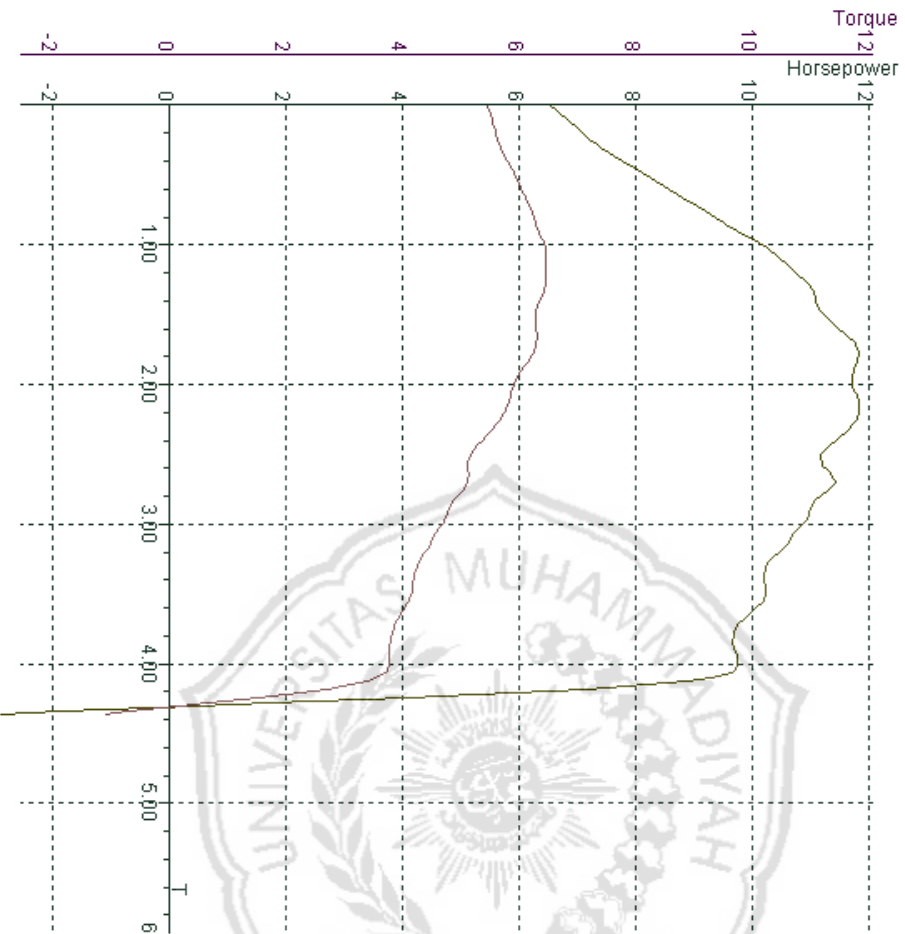


DATA FOR TEST: MEGAPRO003

T (g)	HP (HP)	TQ (N*M)
0.20	6.5	5.48
0.40	6.6	5.53
0.60	6.7	5.58
0.80	6.8	5.61
1.00	6.9	5.65
1.20	7.3	5.79
1.40	8.0	5.97
1.60	8.7	6.19
1.80	9.5	6.36
2.00	10.2	6.51
2.20	10.9	6.62
2.40	11.3	6.62
2.60	11.7	6.44
2.80	11.7	6.17
3.00	11.7	5.94
3.20	11.9	5.85
3.40	11.5	5.81
3.60	11.2	5.44
3.80	11.1	5.16
4.00	11.1	4.96
4.20	10.6	4.61
4.40	10.3	4.37
4.60	10.3	4.26
4.80	10.1	4.10
5.00	9.3	3.71
5.20	4.3	3.53
5.40	0.0	1.67
5.60	0.0	0.00

WHEEL: 11.9 HP 6.6 N*M
 LOSSES: -3.5 HP -1.4 N*M
 TOTAL ENGINE: 15.4 HP 7.98 N*M

Name	MEGAPRO004	HP/KMH	11.8/3.18	N*/M/KMH	6.48/2.06	KMH	93.2	Temp. (°C)	35.0	Humidity (%)	80	Pressure (mbar)	1000.0	Date/Time	19/12/2018 10:16:2
															3



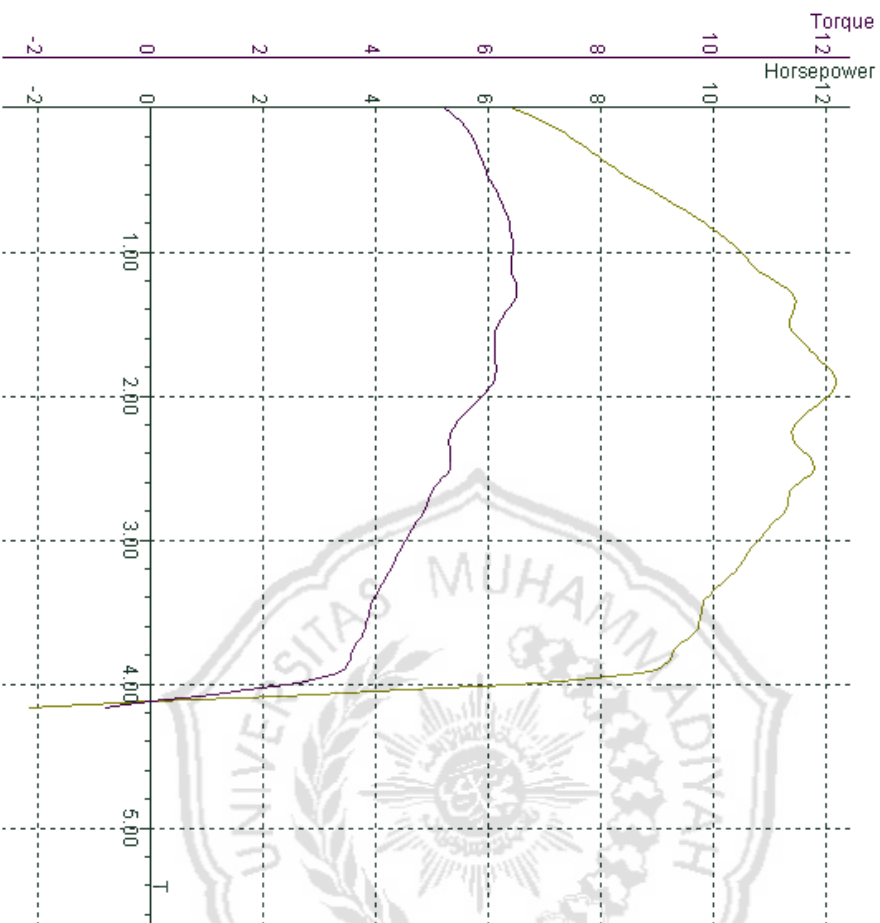
DATA FOR TEST: MEGAPRO004

T (g)	HP (HP)	TQ (N*M)
0.20	6.6	5.49
0.40	6.7	5.50
0.60	6.7	5.52
0.80	6.8	5.53
1.00	6.8	5.54
1.20	7.2	5.62
1.40	7.9	5.84
1.60	8.7	6.07
1.80	9.5	6.28
2.00	10.3	6.47
2.06	10.4	6.48
2.20	10.8	6.48
2.40	11.1	6.34
2.60	11.6	6.31
2.80	11.8	6.17
3.00	11.7	5.89
3.18	11.8	5.78
3.20	11.8	5.72
3.40	11.4	5.32
3.60	11.3	5.14
3.80	11.1	4.90
4.00	10.8	4.65
4.20	10.4	4.36
4.40	10.2	4.18
4.60	10.0	4.02
4.80	9.7	3.82
5.00	9.8	3.77
5.20	6.2	2.37
5.40	-4.8	-1.84
5.60	0.0	0.00
5.80	0.0	0.00

WHEEL: 11.8 HP 6.5 N*M
 LOSSES: -8.6 HP -3.3 N*M
 TOTAL ENGINE: 20.5 HP 9.79 N*M

Name	HP/KMH	N*M/KMH	KMH	Temp. (°C)	Humidity (%)	Pressure (mbar)	Date/Time
MEGAPRO005	12.2 / 2.90	6.51 / 2.26	92.4	35.0	80	1000.0	19/12/2018 10:16:46

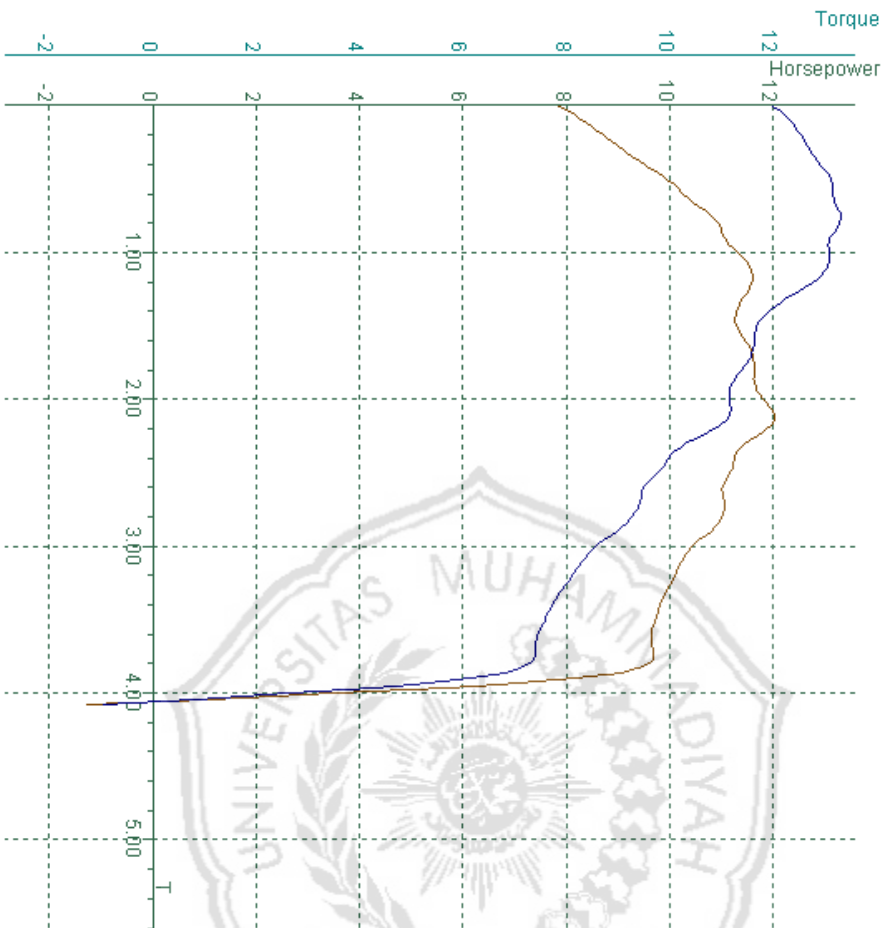
DATA FOR TEST: MEGAPRO005



T (g)	HP (HP)	TQ (N*M)
0.20	6.6	5.31
0.40	6.7	5.37
0.60	6.8	5.42
0.80	6.9	5.47
1.00	7.0	5.52
1.20	7.5	5.75
1.40	8.3	5.94
1.60	9.1	6.20
1.80	9.9	6.39
2.00	10.5	6.44
2.20	11.2	6.49
2.40	11.3	6.51
2.60	11.4	6.31
2.80	11.6	6.13
3.00	12.1	6.14
3.20	12.2	6.09
3.40	12.0	5.85
3.60	11.4	5.39
3.80	11.7	5.07
4.00	11.5	4.83
4.20	11.2	4.51
4.40	10.8	4.25
4.60	9.8	3.94
4.80	9.7	3.81
5.00	9.3	3.57
5.20	6.5	2.45
5.40	-4.1	-1.55
5.60	0.0	0.00

WHEEL: 12.2 HP 6.5 N*M
 LOSSES: -8.3 HP -3.2 N*M
 TOTAL ENGINE: 20.5 HP 9.69 N*M

Name	HP/KMH	N°/MKMH	KMH	Temp. (°C)	Humidity (%)	Pressure (mbar)	Date/Time
MEGAPRO CDI BRT	12.0/13.14	13.32/1.78	94.2	35.0	80	1000.0	19/12/2018 10:26:42



DATA FOR TEST: MEGAPRO CDI BRT

T (s)	HP (HP)	TQ (N°*M)
0.20	8.0	12.09
0.40	8.1	12.16
0.60	8.2	12.22
0.80	8.2	12.27
1.00	8.3	12.32
1.20	8.8	12.56
1.40	9.6	12.94
1.60	10.3	13.15
1.80	10.9	13.32
2.00	11.0	13.26
2.20	11.4	13.08
2.40	11.6	12.70
2.60	11.3	11.86
2.80	11.5	11.63
3.00	11.6	11.34
3.20	11.8	11.16
3.40	12.0	11.10
3.60	11.8	10.75
3.80	11.2	9.94
4.00	11.0	9.47
4.20	11.0	9.21
4.40	11.0	8.50
4.60	10.1	8.07
4.80	9.8	7.68
5.00	9.6	7.43
5.20	9.6	7.25
5.40	3.5	2.64
5.60	-7.0	-5.24
5.80	0.0	0.00

WHEEL 12.0 HP 13.3 N°*M
 LOSSES -9.9 HP -7.5 N°*M
 TOTAL ENGINE: 21.9 HP 20.84 N°*M