

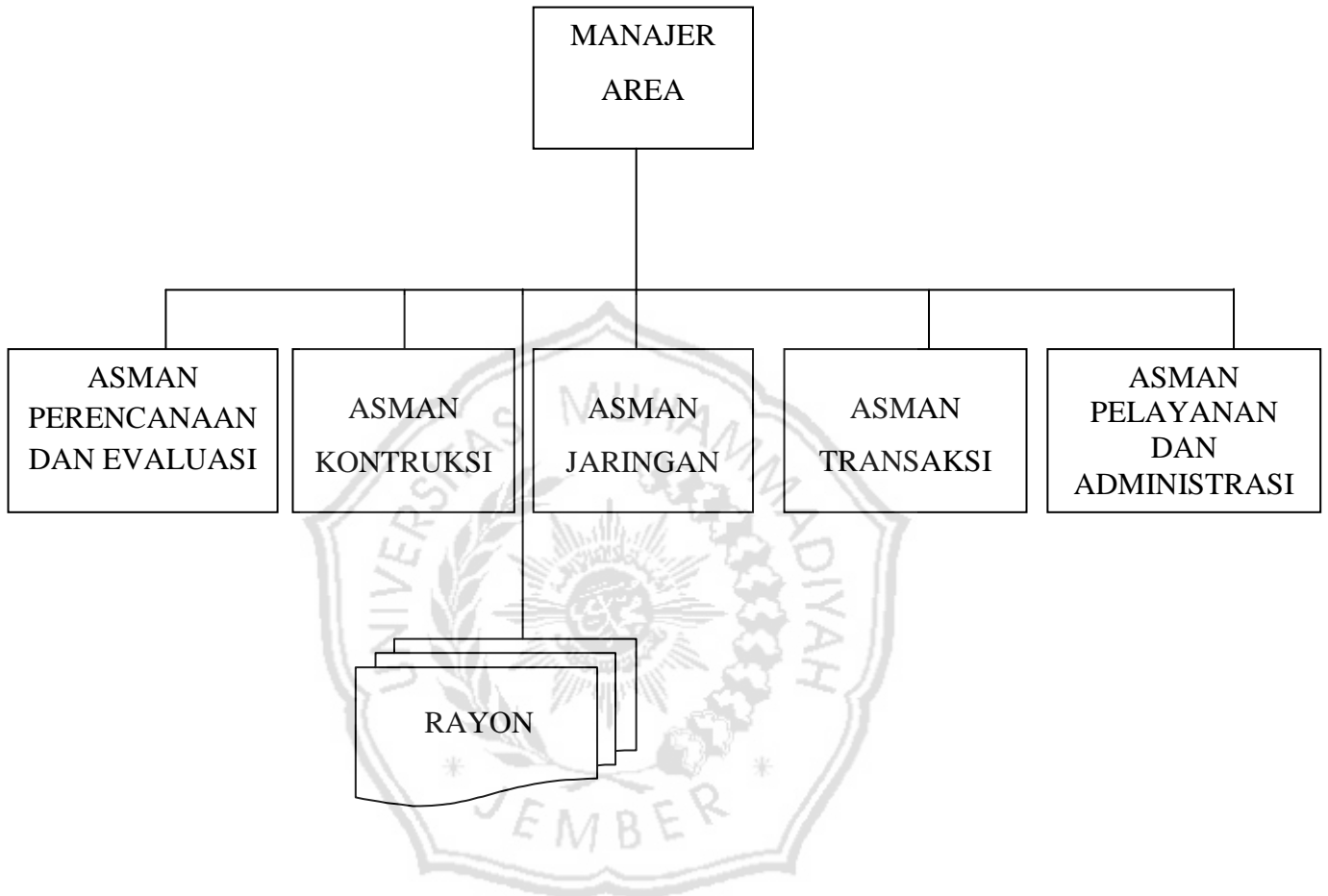
# **LAMPIRAN**

## **1**

**(Struktur Organisasi, Tabel  
Absensi Karyawan)**

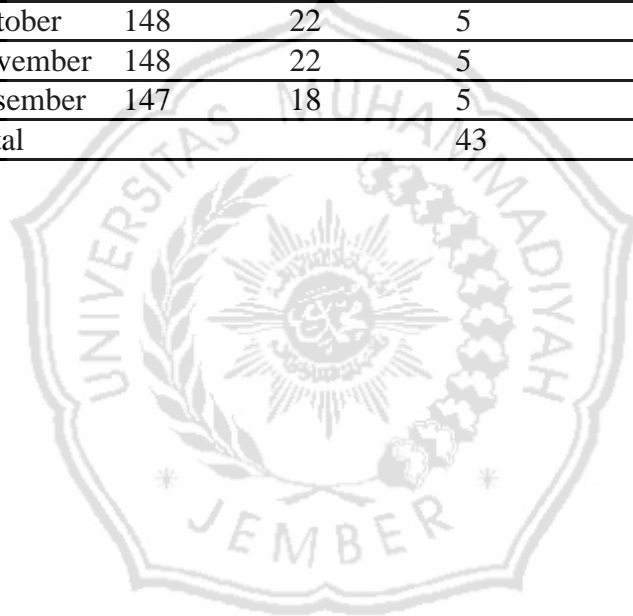


**Struktur organisasi PT. PLN (Persero) Area Jember**



**Daftar Absensi Karyawan PT PLN (persero) Januari/ Desember 2017**

	Bulan	Jumlah karyawan	Rata-rata hari kerja	Tingkat Absensi ketidakhadiran	Presentase (%)
1.	Januari	143	22	2	0,02
2.	Februari	143	20	2	0,02
3.	Maret	143	22	3	0,03
4.	April	148	20	3	0,03
5.	Mei	146	20	3	0,04
6.	Juni	146	17	3	0,03
7.	Juli	146	22	4	0,04
8.	Agustus	146	22	4	0,04
9.	September	147	20	4	0,04
10.	Oktober	148	22	5	0,05
11.	November	148	22	5	0,05
12.	Desember	147	18	5	0,05
	Total			43	



# **LAMPIRAN**

## **2**

**Surat Ijin Penelitian, Kuisisioner,  
Rekapitulasi Data Responden**



# LAMPIRAN

## 3

**(Data Frekuensi Responden  
Berdasarkan Jenis Kelamin,  
Statistik Deskriptif)**



## Data Frekuensi Responden Berdasarkan Jenis Kelamin

### Statistics

Je

N	Valid	60
	Missing	0

### Jenis kelamin

		Frequency	Percent	Valid Percent	Cumulative Percent
Valid	Laki-Laki	34	56.7	56.7	56.7
	Perempuan	26	43.3	43.3	100.0
Total		60	100.0	100.0	

## Statistik Deskriptif

### Statistics

		Skor Akuntansi Pertanggungjawaban	Skor Prestasi Kerja
N	Valid	60	60
	Missing	0	0
Mean		78.58	41.87
Std. Deviation		15.192	9.878
Minimum		40	21
Maximum		94	51

# **LAMPIRAN**

## **4**

**(Uji Validitas dan Uji  
Reliabilitas)**



## Hasil Uji Validitas Variabel Independen

### Hasil Uji Variabel Akuntansi Pertanggungjawaban (X)

**Statistics**

		Skor Akuntansi Pertanggungjawaban	Skor Prestasi Kerja
N	Valid	60	60
	Missing	0	0
Mean		78.58	41.87
Std. Deviation		15.192	9.878
Minimum		40	21
Maximum		94	51

**Skor Akuntansi Pertanggungjawaban**

		Frequency	Percent	Valid Percent	Cumulative Percent
Valid	40	1	1.7	1.7	1.7
	43	1	1.7	1.7	3.3
	44	1	1.7	1.7	5.0
	48	2	3.3	3.3	8.3
	49	1	1.7	1.7	10.0
	51	2	3.3	3.3	13.3
	53	2	3.3	3.3	16.7
	56	1	1.7	1.7	18.3
	64	1	1.7	1.7	20.0
	68	1	1.7	1.7	21.7
	79	2	3.3	3.3	25.0
	80	1	1.7	1.7	26.7
	81	2	3.3	3.3	30.0
	82	4	6.7	6.7	36.7



83	2	3.3	3.3	40.0
84	3	5.0	5.0	45.0
85	7	11.7	11.7	56.7
86	4	6.7	6.7	63.3
87	5	8.3	8.3	71.7
88	6	10.0	10.0	81.7
89	2	3.3	3.3	85.0
90	4	6.7	6.7	91.7
91	2	3.3	3.3	95.0
92	1	1.7	1.7	96.7
93	1	1.7	1.7	98.3
94	1	1.7	1.7	100.0
Total	60	100.0	100.0	

**Hasil Uji Validitas Variabel Dependen**  
**Hasil Uji Variabel Prestasi kerja (Y)**

**Statistics**

		Skor Akuntansi Pertanggungjaw ban	Skor Prestasi Kerja
N	Valid	60	60
	Missing	0	0
Mean		78.58	41.87
Std. Deviation		15.192	9.878
Minimum		40	21
Maximum		94	51

**Skor Prestasi Kerja**

		Frequency	Percent	Valid Percent	Cumulative Percent
Valid	21	1	1.7	1.7	1.7
	22	1	1.7	1.7	3.3
	23	3	5.0	5.0	8.3
	24	3	5.0	5.0	13.3
	25	2	3.3	3.3	16.7
	26	1	1.7	1.7	18.3
	27	2	3.3	3.3	21.7
	28	1	1.7	1.7	23.3
	42	1	1.7	1.7	25.0
	44	1	1.7	1.7	26.7
	45	7	11.7	11.7	38.3
	46	7	11.7	11.7	50.0
	47	9	15.0	15.0	65.0
	48	10	16.7	16.7	81.7
	49	8	13.3	13.3	95.0
	50	1	1.7	1.7	96.7
	51	2	3.3	3.3	100.0
Total		60	100.0	100.0	

## Hasil Uji Reliabilitas Variabel Independen

## Hasil Uji Reliabilitas Variabel Akuntansi Pertanggungjawaban (X)

**Case Processing Summary**

		N	%
Cases	Valid	60	100.0
	Excluded <sup>a</sup>	0	.0
	Total	60	100.0

a. Listwise deletion based on all variables in the procedure.

**Reliability Statistics**

Cronbach's Alpha	Cronbach's Alpha Based on Standardized Items	N of Items
.941	.940	22

**Item Statistics**

	Mean	Std. Deviation	N
Akuntansi Pertanggungjawaban 1	3.42	1.225	60
Akuntansi Pertanggungjawaban 2	3.38	1.166	60
Akuntansi Pertanggungjawaban 3	3.55	1.156	60
Akuntansi Pertanggungjawaban 4	3.63	1.057	60
Akuntansi Pertanggungjawaban 5	3.68	1.112	60

Akuntansi Pertanggungjawaban 6	3.52	1.049	60
Akuntansi Pertanggungjawaban 7	3.33	1.003	60
Akuntansi Pertanggungjawaban 8	3.43	1.031	60
Akuntansi Pertanggungjawaban 9	3.60	1.278	60
Akuntansi Pertanggungjawaban 10	3.65	1.132	60
Akuntansi Pertanggungjawaban 11	3.38	1.027	60
Akuntansi Pertanggungjawaban 12	3.35	1.055	60
Akuntansi Pertanggungjawaban 13	3.75	.968	60
Akuntansi Pertanggungjawaban14	3.75	1.019	60
Akuntansi Pertanggungjawaban 15	3.72	.993	60
Akuntansi Pertanggungjawaban 16	3.65	.799	60
Akuntansi Pertanggungjawaban 17	3.58	.889	60
Akuntansi Pertanggungjawaban 18	3.62	.804	60
Akuntansi Pertanggungjawaban 19	3.72	1.027	60
Akuntansi Pertanggungjawaban 20	3.58	.962	60
Akuntansi Pertanggungjawaban 21	3.53	.892	60
Akuntansi Pertanggungjawaban 22	3.75	.950	60

**Summary Item Statistics**

	Mean	Minimum	Maximum	Range	Maximum / Minimum	Variance	N of Items
Item Means	3.572	3.333	3.750	.417	1.125	.019	22
Item Variances	1.069	.638	1.634	.996	2.560	.064	22
Inter-Item Covariances	.449	.047	.969	.923	20.800	.032	22
Inter-Item Correlations	.417	.051	.697	.646	13.663	.016	22

**Hasil Uji Reliabilitas Variabel Dependen**

**Hasil Uji Reliabilitas Variabel Prestasi Kerja (Y)**

**Case Processing Summary**

		N	%
Cases	Valid	60	100.0
	Excluded <sup>a</sup>	0	.0
	Total	60	100.0

a. Listwise deletion based on all variables in the procedure.

**Reliability Statistics**

Cronbach's Alpha	Cronbach's Alpha Based on Standardized Items	N of Items
.928	.928	12

**Item Statistics**

	Mean	Std. Deviation	N
Prestasi Kerja 1	3.55	1.080	60
Prestasi Kerja 2	3.62	1.043	60
Prestasi Kerja 3	3.58	1.197	60
Prestasi Kerja 4	3.38	1.075	60
Prestasi Kerja 5	3.40	1.167	60
Prestasi Kerja 6	3.58	1.239	60
Prestasi Kerja 7	3.55	1.111	60
Prestasi Kerja 8	3.42	.979	60
Prestasi kerja 9	3.43	1.079	60
Prestasi Kerja 10	3.43	1.254	60
Prestasi Kerja 11	3.48	1.033	60
Prestasi Kerja 12	3.43	.927	60

**Summary Item Statistics**

	Mean	Minimum	Maximum	Range	Maximum / Minimum	Variance	N of Items
Item Means	3.489	3.383	3.617	.233	1.069	.007	12
Item Variances	1.217	.860	1.572	.712	1.828	.049	12
Inter-Item Covariances	.629	.114	1.150	1.036	10.074	.035	12
Inter-Item Correlations	.517	.098	.740	.642	7.539	.015	12

# **LAMPIRAN**

## **5**

**(Uji Asumsi Klasik)**

## Hasil Uji Normalitas

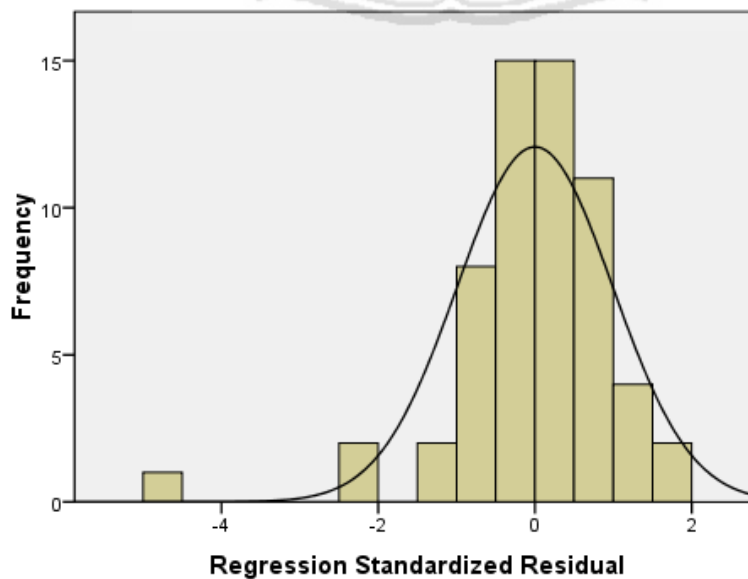
### One-Sample Kolmogorov-Smirnov Test

		Unstandardized Residual
N		60
Normal Parameters <sup>a</sup>	Mean	.0000000
	Std. Deviation	3.54886474
Most Extreme Differences	Absolute	.158
	Positive	.081
	Negative	-.158
Kolmogorov-Smirnov Z		1.221
Asymp. Sig. (2-tailed)		.101
a. Test distribution is Normal.		

## Uji Heterokedastisitas

### Histogram

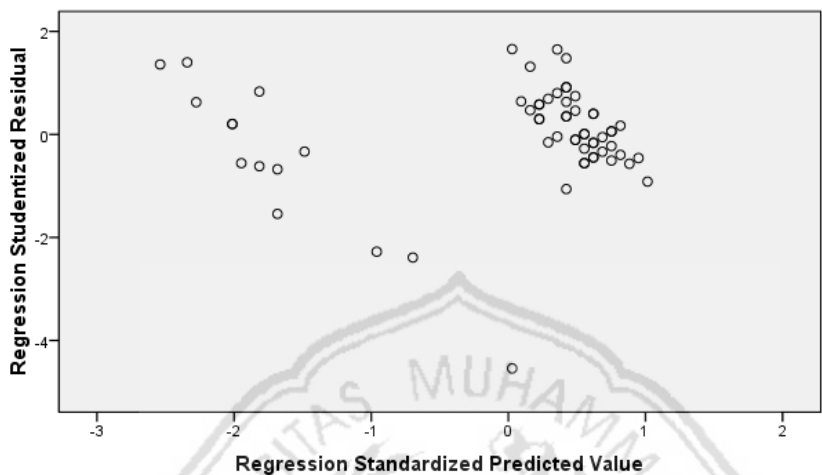
Dependent Variable: Skor Prestasi Kerja





Scatterplot

Dependent Variable: Skor Prestasi Kerja



# LAMPIRAN

## 6

**(Uji Regresi Sederhana, Uji t,  
Uji F, Koefisien Determinasi)**

## Hasil Analisis Regresi Sederhana

**Variables Entered/Removed<sup>b</sup>**

Model	Variables Entered	Variables Removed	Method
1	Skor Akuntansi Pertanggungjaw ban <sup>a</sup>		. Enter

a. All requested variables entered.

b. Dependent Variable: Skor Prestasi Kerja

**Model Summary<sup>b</sup>**

Model	R	R Square	Adjusted R Square	Std. Error of the Estimate
1	.933 <sup>a</sup>	.871	.869	3.579

a. Predictors: (Constant), Skor Akuntansi Pertanggungjawban

b. Dependent Variable: Skor Prestasi Kerja

**ANOVA<sup>b</sup>**

Model		Sum of Squares	Df	Mean Square	F	Sig.
1	Regression	5013.861	1	5013.861	391.354	.000 <sup>a</sup>
	Residual	743.072	58	12.812		
	Total	5756.933	59			

a. Predictors: (Constant), Skor Akuntansi Pertanggungjawban

b. Dependent Variable: Skor Prestasi Kerja

**Coefficients<sup>a</sup>**

Model		Unstandardized Coefficients		Standardized Coefficients	t	Sig.	Collinearity Statistics	
		B	Std. Error	Beta			Tolerance	VIF
1	(Constant)	-5.818	2.454		-2.371	.021		
	Skor Akuntansi Pertanggungjawaban	.607	.031	.933	19.783	.000	1.000	1.000

a. Dependent Variable: Skor Prestasi Kerja

**Collinearity Diagnostics<sup>a</sup>**

Model	Dimensi	Eigenvalue	Condition Index	Variance Proportions	
				(Constant)	Skor Akuntansi Pertanggungjawaban
1	1	1.982	1.000	.01	.01
	2	.018	10.528	.99	.99

a. Dependent Variable: Skor Prestasi Kerja

**Residuals Statistics<sup>a</sup>**

	Minimum	Maximum	Mean	Std. Deviation	N
Predicted Value	18.45	51.22	41.87	9.218	60
Std. Predicted Value	-2.540	1.015	.000	1.000	60
Standard Error of Predicted Value	.462	1.271	.620	.207	60
Adjusted Predicted Value	17.80	51.34	41.86	9.260	60
Residual	-16.120	5.880	.000	3.549	60
Std. Residual	-4.504	1.643	.000	.991	60
Stud. Residual	-4.542	1.657	.001	1.007	60
Deleted Residual	-16.393	5.980	.009	3.663	60
Stud. Deleted Residual	-5.609	1.683	-.019	1.103	60
Mahal. Distance	.001	6.450	.983	1.532	60
Cook's Distance	.000	.175	.016	.035	60
Centered Leverage Value	.000	.109	.017	.026	60

a. Dependent Variable: Skor Prestasi Kerja

